

**Buyers' role in innovation procurement:  
Evidence from U.S. military R&D contracts**

Francesco Decarolis  
Gaétan de Rassenfosse  
Leonardo M. Giuffrida  
Elisabetta Iossa  
Vincenzo Mollisi  
Emilio Raiteri  
Giancarlo Spagnolo

June 2021

Innovation and Intellectual Property Policy  
Working Paper series no. 18

Available at: <https://ideas.repec.org/p/iip/wpaper/18.html>

# Buyers' Role in Innovation Procurement: Evidence from U.S. Military R&D Contracts\*

Francesco Decarolis, Gaétan de Rassenfosse, Leonardo M. Giuffrida,  
Elisabetta Iossa, Vincenzo Mollisi, Emilio Raiteri, Giancarlo Spagnolo

## Abstract

This study provides the first quantification of buyers' role in the outcome of R&D procurement contracts. We combine together four data sources on US federal R&D contracts, follow-on patented inventions, federal public workforce characteristics, and perception of their work environment. By exploiting the observability of deaths of federal employees, we find that managers' death events negatively affect innovation outcomes: a 1 percent increase in the share of relevant public officer deaths causes a decline of 32.3 percent of patents per contract, 20.5 percent patent citations per contract and 34.3 percent patent claims per contract. These effects are driven by the deaths occurring in the six months before the contract is awarded, thereby indicating the relevance of the design and award stage relative to ex-post contract monitoring. Lower levels of self-reported within-office cooperation also negatively impact R&D outcomes.

*Keywords:* innovation, R&D, public procurement, patents, bureaucracy, competence, cooperation, state capacity.

*JEL:* H57, O31, O32,

---

\*Francesco Decarolis, Bocconi University and IGIER, email: francesco.decarolis@bocconi.it; Gaétan de Rassenfosse, École Polytechnique Fédérale de Lausanne, email: gaetan.derassenfosse@epfl.ch; Leonardo M. Giuffrida, ZEW Mannheim, email: leonardo.giuffrida@zew.de; Elisabetta Iossa, University of Rome Tor Vergata, and GREEN-Bocconi, email: elisabetta.iossa@uniroma2.it; Vincenzo Mollisi, University of Mannheim, email: vincenzo.mollisi@gmail.com; Raiteri, School of Innovation Sciences, Eindhoven University of Technology, and École Polytechnique Fédérale de Lausanne, email: e.raiteri@tue.nl; Giancarlo Spagnolo, SITE-Stockholm School of Economics, EIEF and University of Rome Tor Vergata, email: spagnologianca@gmail.com. We thankfully acknowledge financial support from the University of Rome Tor Vergata (*Bando Doppia Cattedra*, 2014-2016). Decarolis gratefully acknowledges financial support from the European Research Council (ERC-2015-StG-679217). Elisabetta Iossa and Giancarlo Spagnolo also gratefully acknowledge financial support from the Italian Ministry of Education Grant no. 2017Y5PJ43.001 PRIN 2017. Emilio Raiteri gratefully acknowledges financial support from the “EPFL Fellows co-funded by Marie Skłodowska-Curie” program for the project “Innovative Public Procurement as Innovation Policy” (Action: H2020-MSCA-COFUND-2015, Grant Agreement Number: 665667.) For the comments received, we thank Klenio Barbosa, Vivek Bhattacharya, Michael Best, Sascha Becker, John De Figueiredo, Philippe Gaignepain, Avi Goldfarb, Josh Gottlieb, Ari Hyytinen, Alex MacKay, Claudio Michelacci, Gianluca Orsatti, Lars Persson, Andrea Prat, Brian Silverman, Stephane Saussier, Otto Toivanen as well participants at ZEW, Innopat, GSE, SIEP seminars and conferences. The usual disclaimers apply.

# I Introduction

Government procurement of R&D services and innovative goods is a crucial activity that led to the development and diffusion of major innovations that changed our world. Classic examples include computers, large passenger jets, smartphones, semiconductors and the Internet.<sup>1</sup> Within our dataset, we observe R&D contracts that lead to the patents upon which widely used products are based, such as voice-activated helpers (like Siri or Alexa) and smart household appliances (like the Roomba vacuum cleaners). Besides specific innovations, the large public demand for innovation also boosts private R&D spending (Slavtchev and Wiederhold 2016, Cozzi and Impullitti 2010), affects business long term (Howell 2017), and influences the direction of innovation (Clemens and Rogers 2020).<sup>2</sup> All these forces have made public procurement of innovation a central policy tool to face major societal challenges, linked to population ageing, epidemic diseases and climate change, and to boost competitiveness and growth (OECD 2017).

Still, Mazzucato (2013), by building on successful examples to praise the role of the State as an innovator, triggered a hot debate. Her book was criticized on many grounds, from ignoring tax revenue when claiming that the State does not reap the fruits of its investments to downplaying the crucial role of the private sector in developing new technologies into useful products (e.g., Westlake 2014). Most relevant to this paper, several critics argued that the described cases were hand-picked successes, while little mention was made of the many wasteful projects that led to no useful innovation, if not to spectacular failures (Mingardi 2015, Liebreich 2018). Successes and failures are there for every policy, but, as stressed by Takalo et al. (2017), the key challenge is to identify the drivers' of successful R&D cases. Our study contributes to this debate by quantifying for the first time the importance of buyers as a determinant of the success of public procurement of innovation.

Indeed, questions have been raised on both the capacity of public procurers to manage the process effectively,<sup>3</sup> and the ability of governments' agencies to "pick winners" by supporting specific technologies and guiding technological development (Nelson and Langlois 1983). When procuring innovation, public buyers play a key role towards the project' success: they make the internal and

---

<sup>1</sup>See Nelson (1982) and Flamm (1987). See Maurer and Scotchmer (2004) and Cabral et al. (2006) for overviews.

<sup>2</sup>Between 2006 and 2012, our own data reveal that the U.S. federal governments spent approximately \$382 billion in R&D procurement, an average of \$54.57 billion per year.

<sup>3</sup>The World Bank has recently begun to release its Benchmarking Public Procurement, which examines the procurement process in 180 economies. The report reveals the existence of considerable heterogeneity across states. Concerns on the lack of competence of public procurers have recently been voiced by Saussier and Tirole (2015).

market assessment to identify the government needs and the state of potential supply, translate needs into functional requirements, design complex tenders and award mechanisms, select the most suitable contractor and manage contract execution which ends months, if not years, after the award.<sup>4</sup> Inefficiencies at each of these stages may significantly compromise the procurement and negatively impact the innovation process. However, despite its importance, there is limited research on the role of public buyers, as opposed to, for instance, the extensively studied issue of the efficacy of public policies (subsidies, tax benefits, etc.) for private R&D (Takalo et al. 2013a,b).

There are two main measurement challenges to a quantitative assessment of public buyers' role in innovation procurement. The first is that evaluating the performance of R&D contracts is notoriously difficult. Measures typically used in the procurement of standardized goods, such as unit prices, or in the procurement of works and services, such as delays and cost overruns, have little meaning when the object of a contract is an innovation. With innovation procurement a natural possibility is to measure output through patents, but so far it has been not easy to link patent data with procurement contracts and buyer characteristics.<sup>5</sup> The second problem concerns how to attain a measure of the effectiveness of public buyers. The prevalent approach has been to use a fixed-effects strategy (Bandiera et al. 2009, Best et al. 2017, Bucciol et al. 2017), but this requires adequate variability in the data and leaves open the question of what exactly is driving the results. Another approach is to use surveys (Rasul and Rogger 2016, Decarolis et al. 2020).

In this paper, we address both measurement challenges by making use of a novel dataset on U.S. federal R&D procurement contracts that combines multiple data sources. First, we use the Federal Procurement Data System (FPDS), which contains information (e.g., awarding bureau, price, product or service code, contract amount, contract type, contractor features, etc.) on every contract awarded by U.S. federal agencies. The Department of Defense (DoD) accounts for most of

---

<sup>4</sup>These central roles of public buyers have recently been highlighted by the European Commission, which is pursuing a strategy in support professionalization of public procurement (European Commission, 2020).

<sup>5</sup>The use of patents as procurement outcome can be found in Corredoira et al. (2018), who show that federally funded patents tend to be associated with larger technological influence, in Li et al. (2017) who provide evidence that about ten percent of the scientific grants awarded by the U.S. National Institutes of Health (NIH) generates at least one patent, and in Azoulay et al. (2018) who show instead that NIH grants foster the development of patents in the private sector. Regarding the studies on innovation procurement, so far they have been mainly based on surveys (Aschhoff and Sofka 2009, Guerzoni and Raiteri 2015), administrative meso-level data (Slavtchev and Wiederhold 2016), and micro-level patent data (Raiteri 2018). Within these studies, Aschhoff and Sofka (2009) find that public procurement has a positive effect on firms' innovative output, proxied by the shares of revenues coming from innovated products, whereas Raiteri (2018) shows that U.S. federal procurement contracts that foster the development of technologies are more pervasive than a group of suitable controls. An alternative outcome measure could be the award of a follow-on contract, as this can provide useful information on the success of an R&D contract (Che et al. 2021). Unfortunately, however, FPDS data do not allow us to link it to the original contract to follow-on contracts.

R&D contracting, representing about 85 percent of the procurement cases in the dataset.<sup>6</sup> Second, we use the 3PFL Database of Federally Funded Patents (3PFL), as collected by de Rassenfosse et al. (2019a). It links information on patented inventions (namely, the number of patents, their associated citations and claims) induced by a U.S. federal procurement contract of R&D. The last two datasets cover features of the awarding offices. The third dataset reports fine statistical information on the entirety of the public workforce produced by the Office of Personnel Management, made publicly available through the Federal Human Resource database (FedScope). The fourth dataset is the Federal Employee Viewpoint Survey (FEVS), which measures government employees' perceptions of several characteristics of their agency and specific office.

Our quantification of buyers' role in innovation outcomes exploits the variation across bureaus and time of employees' death events. We first analyze the variation in federal employees' death events relative to a comprehensive list of office and contract observable characteristics. Then, we quantify how a death event impacts procurement outcomes.<sup>7</sup> Clearly, the death of employees might matter through several channels: it may cause emotional distress or work overload to the remaining workers, or induce a temporary shortage of skilled workers (Warren 2014); if it concerns managerial positions, it may create a management vacuum within the organization. While we cannot test for all these possible mechanisms in as much detail as we would like, we analyze if deaths have different impacts on outcomes depending on the type of employee, identified by age and salary, and on the stage of the procurement process in which it occurs. Variations in the impact across employees types or procurement timing are indicative that the effect cannot be just emotional, and it is unlikely to be related to workload, as employees' load is typically spread uniformly across time.

Our main findings are as follows. The unexpected death of 'relevant employees', identified by age and salary figures as those covering managerial roles, occurring in the six months before the contract is awarded, produces a strong negative impact on all our innovation outcome measures. An increase of 1 percent in relevant employees deaths causes a decline of 32.3 percent of patents per contract, 20.5 percent patent citations per contract and 34.3 percent patent claims per contract. By contrast, we find a considerably weaker, though still positive and statistically significant effect of unexpected managers' deaths occurring during the contract management phase that follows the contract's award. Similarly, no effects are found when death events involve employees less likely to cover management roles. These results are robust to the inclusion of bureau and contractor

---

<sup>6</sup>See Carril and Duggan (2020) for a recent study of the DoD's procurement practices involving non-R&D outcomes.

<sup>7</sup>For a review of this type of identification strategy see the recent application by Jäger (2017).

fixed effects and are qualitatively stable across various modeling choices, specifications including different sets of controls and different subsamples.

These results suggest that managers deaths cause disruption of specialized human capital that is hard to replace. This interpretation is in line with practitioners' view that in procurement of innovation high technical competence is needed for managing projects. It is supported by various additional findings discussed in the paper. For instance, when we consider the different DoD departments, we find that the effects of deaths on innovation outcomes are more significant for the Army and Air Force relative to the Navy. This is consistent with the fact that the specialized literature has highlighted how the latter department relies less than the other two on project managers with technical - and not only administrative - knowledge to solicit, assign, and monitor procurement projects (Rendon et al. 2012).

In the final part of the paper, we expand the analysis to include (perceived) office characteristics. The FEVS data allow us to measure at the level of bureau-year-State features such as the self-perceived level of the bureau's skills, incentives, and within-office cooperation. We find evidence of a direct effect linking the level of cooperation to improvements in all of our innovation measures, but no interaction effects between cooperation and death events. Neither direct nor indirect effects are found for the level of skills and incentives within the bureaus. These results imply that better working environments cannot compensate for the sudden loss of specialized human capital at the center of our analysis with higher perceived levels of office cooperation, skills, or incentives.

Overall, these results shed new light on the functioning of innovation procurement. While some of them are likely to be specific to the practices of the federal agencies in our sample, we consider the finding on the importance of the pre-award phase as consistent with the key characteristics of procurement of innovation. As discussed below, innovation procurement requires extensive work prior to the proper tendering stage and the coordination of large teams with interdisciplinary pieces of knowledge. This clearly points to the crucial role of management practices in the context of innovation procurement, providing additional evidence in favor of the framework proposed by Bloom and Van Reenen (2007) on the factors affecting the success of private and public organizations.

The rest of the paper is organized as follows: section 2 sketches the DoD's R&D procurement process; section 3 describes the data; section 4 discusses the empirical strategy; section 5 displays the results; section 6 concludes.

## II The DoD Procurement Organization

The US Government Accountability Office (GAO) has recently issued several reports that provide some useful background information on the DoD procurement process and management (see, e.g, GAO 2017, 2019a,b). Four important aspects are particularly relevant to our study. First, although all procurement contracts are subject to the US Federal Acquisition Regulation (FAR), every single office and bureau’s internal functioning still matters. Agencies and major defense acquisition programs use different approaches to organizing and leveraging support organizations. For example, the Navy programs rely on naval warfare centers to provide the engineering expertise necessary to design, build, maintain, and repair the Navy’s aircraft, ships, and submarines. The Army programs reviewed by GAO rely on support organizations such as the Army Contracting Command for contracting functions, the Aviation and Missile Research Development and Engineering Center for engineering expertise, and others to provide life cycle management support. The Air Force programs rely on support organizations established within their commands. This explains the substantial variability across the DoD’s different purchasing bodies that we observe in our study.

Second, the procurement of R&D at DoD is a very different acquisition process than that for goods or services, which is studied, for instance, in Carril and Duggan (2020). Strategic decisions are taken throughout all acquisitions stages, from planning to award, from administration to ex-post oversight. Governing these stages effectively requires identifying and analyzing agency-wide acquisitions ahead of 12-24 months and ensuring that needs in the budget request submission are consistent with planned acquisition strategies, the tender specifications and the implementation plans. To manage this process effectively, the DoD relies on program officers coordinating bureaus composed of civilian, military, and contractor support personnel and cross-functional interdisciplinary teams in which key stakeholders execute the acquisition tasks. The number and composition of personnel involved in major defense acquisition programs vary considerably, ranging from 30 to 397.<sup>8</sup> These features of DoD suggest that a prominent role for the success of a procurement is played by the ability of the program officer to manage these teams.

Third, while the skills and abilities of the team members are surely important, it is standard

---

<sup>8</sup>In a review of eleven major defense acquisition programs, GAO (2019b) found that the program workforce size and composition were influenced by the degree to which the program assumed responsibility for technical development and integration, as well as the program’s stage within the acquisition life cycle. Programs that assumed more responsibility for developing and integrating key technologies generally have a larger workforce, primarily, but not only, composed of engineering and technical personnel.

practice for program officials to use contractor support when the number of government personnel allocated to the program is not sufficient to meet their needs, when the technical skills are not available, or in order to fulfill short-term tasks that are too brief to justify hiring government personnel.<sup>9</sup> This feature suggests that the availability of a skilled workforce can be achieved through well-managed outsourcing practices, even when the required technical skills are not available internally.

Finally, the procurement of R&D at DoD follows specific rules that regulate the ownership of inventions realized under a government contract and, more specifically, follows the FAR. FAR Subparts 27.2, 27.3, and 52.227 mandate that contractors should promptly disclose any invention conceived or first actually reduced to practice in the performance of work under a government contract (for experimental, developmental, or research work). The disclosure should describe the nature and the purpose of the invention and also identify any related scientific publication or public use of the invention. After the disclosure, if the invention is patentable, the contractor may elect to retain the title of the invention under the condition that it timely files a patent application at the United States Patent and Trademark Office (USPTO) and gives a non-exclusive, royalty-free license to the US government to use the invention or have the third party using it on the government's behalf. If a contractor fails to disclose an invention or fails to timely file a patent application, it risks losing all the rights in the invention (McEwen et al. 2012, p.52). Therefore, companies that perform R&D work for the DoD have a strong incentive to report any inventions realized under a government contract and to file patent applications for those inventions. These rules set out in the FAR allows us to identify patented inventions spurred by DoD contracts unambiguously. To ensure that the government retains the rights to use the patented invention, the FAR requires the contractor to include in the patent a statement acknowledging that the invention was made with government support. The statement shall include the unique identifier of the specific procurement contract underpinning the patented invention and the name of the agency awarding the contract. The 3PFL database described in section III precisely exploits the contract identification number enclosed in the government interest statement in the patent document.

---

<sup>9</sup>Using contractor support personnel to perform tasks helps to overcome the lengthy process of hiring government personnel or the possibility that the number of personnel authorizations allocated to the program by their respective command do not meet their estimated workload requirements.



### III Data

As alluded, the dataset developed for this study combines together several sources. The level of observation is that of individual contracts, as tracked in the U.S. Federal Procurement Data System (FPDS).<sup>10</sup> From this large dataset, we apply a series of filters aimed at selecting R&D procurement contracts.<sup>11</sup> Moreover, we restrict the sample according to the following rules: R&D activity performed within U.S. borders; award amount greater than \$14,000; expected termination date prior to the end of the sample (to keep only completed projects we include exclusively contracts awarded until the end of 2012); no Small Business Innovation Research (SBIR) contracts and no grants.<sup>12</sup> This leaves us with a sample of 1,750 R&D contracts awarded between 2006 and 2012, with an overall value of \$10.8 billion, 11,271 offers submitted, and 345 unique winning firms. Table 1 reports how these contracts are split between federal agencies: the vast majority of the contracts in the data are awarded by bureaus belonging to one of the three ramifications of the DoD.<sup>13</sup>

\*\*\* INSERT TABLE 1 ABOUT HERE \*\*\*

The main characteristics of these contracts are reported in Table 2, panel (a). Contract amounts are relatively small and highly skewed: 50 percent of contracts have an awarding price below

---

<sup>10</sup>See: <https://usaspending.gov>. The data covers all federal contracting offices' transactions over \$3,000. They have been used extensively in previous research, including studies by Liebman and Mahoney (2017), Warren (2014), Kang and Miller (2017), Giuffrida and Rovigatti (2018), Decarolis et al. (2020).

<sup>11</sup>The R&D code specified in each contract comes from the variable "Product or Service Code" and is composed of two alphabetic and two numeric digits. The first digit is always the letter "A" to identify R&D; the second digit is alphabetic "A to Z" to identify the major R&D category; the third digit is numeric 1 to 9 to identify a subdivision of the major R&D category, and the fourth digit will be 1 to 7, to identify the appropriate stage of R&D with: (1) Basic Research; (2) Applied Research and Exploratory Development; (3) Advanced Development; (4) Engineering Development; (5) Operational Systems Development; (6) Management and Support; (7) Commercialization. The term "research and development" normally encompasses the first six categories. For example, the construction of recreational facilities at an installation used exclusively or generally for research and development would not normally be classified as procurement of "research and development" but is sometimes included in the sixth category to classify obligations according to the ultimate purpose of the procurement. Commercialization transactions are excluded from the analysis. R&D categories included in the sample are: Community Service/Development; Defense System; Defense Other; Economic Growth; Energy; Environmental Protection; General Science/Technology; Medical; Space; Other R&D. These categories are the only ones associated with at least one contract producing at least one patent in our data. In the appendix, we show the robustness of our baseline estimates to this sample selection.

<sup>12</sup>The \$14,000 threshold is the lowest contract value associated with a contract producing a patent in our sample. In the appendix, we show the robustness of the baseline estimates to choosing different thresholds. Regarding the exclusion of SBIR contracts, these contracts are specifically intended to help certain small businesses conduct R&D activities aimed at their subsequent commercialization (Howell 2017, Bhattacharya 2018).

<sup>13</sup>We indicate as *bureaus* the sub-units of the U.S. federal government agencies. All federal agencies, whether executive (i.e., analogous to ministers common in parliamentary or semi-presidential systems)—such as DoD—or independent—such as NASA—will be indicated as *agencies* throughout this study. Each agency has its own organizational structure according to which its power is exercised through different sub-units, the bureaus. Bureaus are charged with a specific mission depending on the agencies they are affiliated to. Bureaus undertake different tasks, including procurement, and are located in different U.S. States.

\$245,000, while 10 percent of contract spending is accounted for by contracts worth more than \$1,910,000. The average price is almost \$1 million, but the total cost, inclusive of any subsequent modification, is more than \$6 million on average. Correspondingly, the average contractual duration is 560 days, while the average final contract duration, which includes any delay, is 928 days. The substantial increase in cost, paired with relatively small delays, is explained by the cost-plus nature of most of the contracts (79 percent). The preponderance of cost-plus contracts in DoD procurement is well documented (Kang and Miller 2017, Carril and Duggan 2018). It is explained by the DoD’s interest to obtain a timely completion of projects that have highly uncertain costs at the time of bidding.<sup>14</sup> Yet, contrary to other studies, we observe that most of the contracts are awarded through open procedures (64 percent) and are characterized by full and open competition (91 percent).

\*\*\* INSERT TABLE 2 ABOUT HERE \*\*\*

The three variables at the bottom of panel (a) are the outcome measures of innovation used in this study. They come from the 3PFL database from de Rassenfosse et al. (2019a), which exploits the Federal Acquisition Regulation to identify patented inventions directly related to federal contracts, as described in the previous section. The 3PFL database covers USPTO patents granted between 2005 and 2015.<sup>15</sup> As panel (a) of Table 2 indicates, in addition to the number of patents, the 3PFL data also allows us to measure patent-level bibliographic information which can be seen as a proxy for follow on innovation and which we recover from the European Patent Office’s Worldwide Patent Statistical Database (PATSTAT). More in detail, using the information contained in the 3PFL database, we build three different performance measures for our sample of R&D contracts: *Number of Patents*, *Number of Citations*, *Number of Claims*. The variable *Number of Patents* reports the total number of patented inventions associated with a specific federal R&D contract.<sup>16</sup> *Number of Citations* reports the number of patent citations received by the patents associated with a specific R&D contract in the five years after the patent application was filed divided by the total number of patents associated with that contract. Finally, the variable *Number of Claims* reports the number of independent claims included in the patents associated with an R&D contract divided

---

<sup>14</sup>See Bajari and Tadelis (2001) for an extensive study of the trade-off between time and cost to completion induced by the contract pricing format.

<sup>15</sup>Having data until 2015 and considering three years at least on average for the patentability process to end, we exclude contracts awarded from 2013 onward. This fact is confirmed by the negligible share of contracts associated to at least one patent in the 2013-2015 time span.

<sup>16</sup>Among the 1,750 R&D contracts in the data, the number of patents is 221. Table 3 reports the number of patents per category of federal R&D.

by the total number of patents associated with that contract. Patent claims delineate the ‘metes and bounds’ of the patent owner’s legal right (Merges et al. 2003) and their count has been used as a proxy for the scope and the value of a patented invention (Harhoff et al. 2003, Lanjouw and Schankerman 2004, Bessen 2008, de Rassenfosse and Jaffe 2018).<sup>17</sup>

One can legitimately question whether patents represent a valid measure of the public value of R&D contracts. A first concern relates to the possibility for a contractor to choose secrecy over patenting. The FAR states that the contractor should file a patent application in order to retain title to the invention. If the contractor fails to do so, the government has the right to file a patent application. There are thus strong incentives to apply for a patent. However, not all contractors may be aware of the regulations or may comply. In such case, secrecy would be an issue only if projects subject to unexpected death of managers during selection were more likely to choose secrecy a few years down the road, which is rather unlikely. Finally, if preference for secrecy is a firm-level variable, the fact that we control for the idiosyncratic tendency to generate patent in the regression model - and the inclusion of firm fixed effects in robustness analysis - should guard against remaining threats of omitted variable bias.

\*\*\* INSERT TABLE 3 ABOUT HERE \*\*\*

A second concern is that the Government itself may force the contractors to keep their invention secret given that the disclosure of defense-related inventions may have implication for national security. As showed in Table 3, about 70 percent of the contracts were explicitly awarded to conduct R&D work in the defense field. The Invention Secrecy Act of 1951 regulates this process. It enables the Patent Office to impose a secrecy order on inventions that might be detrimental for national security.<sup>18</sup> The imposition of a secrecy order put the patent prosecution process on hold and no patent is issued until the order is rescinded.<sup>19</sup> Clearly, if inventions that are connected to defense-related R&D contracts often incurred the imposition of long lasting secrecy orders, we would not be able to observe them in our data, making our measure of contract performance rather

---

<sup>17</sup>Although the award of a follow-on contract could provide useful information on the success of an R&D contract, the data does not allow us to directly link follow-on contracts to the original contract. Moreover, follow-on contracts are often assigned by different bureaus relative to the one assigning the original contract, thus making any attempt to indirectly link contracts to their follow-on contracts prone to severe measurement errors.

<sup>18</sup>The U.S. Senate passed the first Secrecy Act at the break of World War I and reissued it during World War II (Lee 1997, Gross et al. 2019).

<sup>19</sup>If the application meets the patentability criteria, the patent office issues a *Notice of allowability* but does not issue the patent. The application disappears from public databases. A secrecy order lasts for a period of one year, but the government agency that initially requested it can have it renewed indefinitely (USPTO 2019, at 100-10).

imprecise. To assess the severity of this issue, we need to determine the likelihood of such an event. According to figures from the Federation of American Scientists (FAS), between 2006 and 2012 the USPTO imposed on average 105 new secrecy orders per year on patent applications filed by different kind of entities including firms, universities, independent inventors, federal agencies and laboratories.<sup>20</sup> As reported in the FAS data, about 25 percent of these patent applications are filed by private entities and did not receive any kind of support by the U.S. government. *de Rassenfosse et al. (2019b)* show that in a sample of over 2,800 patents with a secrecy order imposed (and later rescinded) between 1982 and 2006, the secrecy order lasted less than three years for about 50 percent of the patents, and less than five years for almost 70 percent of the patents. In addition, only about 15 percent of the patents applied for between 2000 and 2006 that had a secrecy order imposed and then rescinded, acknowledge support from a federal R&D contract. All in all, the number of secrecy orders issued yearly is fairly low and only a limited amount of these orders appear to target the output of federal R&D contracts. Moreover, given that a substantial proportion of the secrecy orders lasts for less than three years, many of these potentially unobservable inventions would resurface on time to be included in our data.

Lastly, two common issue that arise in working with patent data concern the large heterogeneity in quality across patents and the presence of a large number of contracts producing zero patents. Regarding the former issue, the majority of patents are worth little (*Trajtenberg 1990*) and merely counting patents may not provide an accurate measure of R&D performance. Starting with *Trajtenberg (1990)* and *Albert et al. (1991)*, a dense body of work has documented that the number of citations that a patent receives correlates with its (technological and economic) importance (for a comprehensive literature review, see *de Rassenfosse and Jaffe 2017*). To account for the heterogeneity in patent quality, we have estimated the regression models on a citation-weighted patent count. This approach leads to very similar conclusions. Regarding the second issue, that of vastly more contracts with no patents than with patents, common empirical work approaches use a linear model with the log of one plus the number of patents as outcome variable or a count data model. In this paper, we prefer to stick to the linear model to prevent information loss due to the typical separation problem of count data models, discussed by *Santos Silva and Tenreyro (2010)*. Another main advantage of using linear models is that they are less prone to bias due to the collinearity in the fixed effects. However, we consider the non-linear model as a further robustness check in the Appendix. But since a linear transformation inside the log can bias the estimates, we follow

---

<sup>20</sup>Data available at <https://fas.org/sgp/othergov/invention/stats.html>

Bellégo and Pape (2019) and use as dependent variable the logarithm of a small constant  $\mu$  (set equal to  $10^{-9}$ ) plus the innovation counts.<sup>21</sup> As illustrated in the appendix (Figure C.1), different values of  $\mu$  affect the quantitative, but not the qualitative, finding that public official deaths affect patent outcomes.

The third source of data that we combine is the FedScope database. It contains data on nearly all federal civilian executive branch employees and we use it to construct measures of the contracting officers' and offices' characteristics. Since the data are released at the bureau-level, we merge them with the R&D contract-level data by aggregating the latter by their bureau, State of contract execution and year of contract award.<sup>22</sup> Employment data include demographic characteristics along with information on appointments and tasks (e.g., length of service, occupation category, pay grade, salary level, type of appointment, work schedule, and location of each single employee).

Panel (b) of Table 2 reports summary statistics for the subset of white-collar employees. The variable *Relevant employment* in this table plays a fundamental role in our analysis. It indicates the subset of white-collar workers in each combination bureau-State who are below the median age and above the median salary.<sup>23</sup> In fact, although ideally one would observe which employees were involved with a specific contract as well as their health status, the data are not granular enough. Our approach to deal with this limitation is to assess the impact on innovation outcomes of shocks (i.e., death events) affecting relevant employees, whom we define as those white-collar workers whose age and salary is suggestive of their capabilities and whose death is most likely unexpected. We thus select employees having simultaneously an age below the median age and a salary above the median salary. The selection by age reduces the incidence of chronic disease on death occurrences and, more generally, the likelihood of being sick is highly reduced during the first four decades of the lifespan of a person (Gavrilov and Gavrilova 2011).<sup>24</sup> Ideally, we would want to observe the death of managers. Unlike the Employment cube that distinguishes managers from other employees, the Separation cube only reports office features other than employment

---

<sup>21</sup>We set this value such that the estimates of the linear model and the Poisson pseudo-likelihood were the closest as possible. See Appenix C for a thorough discussion of the robustness of our results to alternative approaches.

<sup>22</sup>This is possible through an external dictionary which maps the variable "*Contracting Office Agency ID*" in FPDS to the variable *AGYSUB* of FedScope.

<sup>23</sup>In the FedScope data, the median salary and age across all federal bureaus is 50,000-59,999\$ and 45-49 years, respectively. Hence, our *relevant (white-collar) workers* are those with a salary greater or equal to 50,000\$ and an age below 50 years old. The median salary and age in the analysis sample differ due to the fact that only a subset of bureaus is part of it (see Table 2).

<sup>24</sup>Moreover, civil servants that suffer from chronic health problems, are likely to be on sick leave and excluded from the dataset.

composition. We combine the two pieces of information to detect managers’ deaths. Our strategy is selecting separating employees that are most likely to be managers, i.e. having an age below the median age and a salary above the median salary relative to these variables’ distributions for managers simultaneously. This implies looking at employees with a salary of \$50,000 or more and an age of 45 years or less. Regarding salary, a selection above the median of the salary distribution conditional on age picks up 88 percent of the entire manager population and likely selects the most effective young managers. There is also strong, positive correlation between our indicator of relevant employee and higher levels of education.<sup>25</sup> In the next section, we will explain in details how death events occurring among relevant employees can be used to devise the empirical strategy at the heart of our analysis.

Additional measures of bureau characteristics appearing in panel (b) of Table 2 come from the fourth data source, the FEVS. They show bureau-level survey measures of the working environment. The survey, administered yearly since 2002 by the Office of Personnel Management, is the largest and most well established source of data on federal offices’ features. We will return to these data in the final part of our analysis where we discuss some potential channels through which the death of relevant managers might worsen the outcome of procurement-related innovation contracts. We will focus in particular on the three features listed at the bottom of panel (b), namely *cooperation*, *skills* and *incentives*. These variables measure respondents’ perceptions about their bureaus’ strengths along these three dimensions of personnel hiring and working.<sup>26</sup>

Finally, panel (c) of Table 2 reports summary statistics at the seller level. Given the potential relevance of selection effects intrinsic to the procurement process, in our setting it is important to control for the contractors’ ability to perform R&D. We do so by developing a measure that grasps the technological capacity of a contractor in the technological domain to which the contract is related, at the moment of the award. We collect information on all the privately funded patents applied for between 2003 and 2011 by the contractors in our sample.<sup>27</sup> In particular, we need

---

<sup>25</sup>For the two groups defined by our selection criteria (i.e., relevant employees and other white collar workers), a one-sided t-test of the difference in means of the years of schooling between these two groups (15.60 years and 14.78 years respectively) strongly rejects equality and confirms at least 1 year of difference.

<sup>26</sup>See Decarolis et al. (2020) for more details.

<sup>27</sup>Privately funded here means that these inventions were achieved without the support of the U.S. federal government neither through procurement contracts, nor grants. Federally funded patents were excluded using the 3PFL database. More precisely, for every patent application we recover the patent identifier, the year of application at the USPTO, and the international patent classification (IPC) classes to which the patent application was assigned. We then produce a correspondence table that maps the PSC code assigned to a federal procurement contract into the relevant IPC classes. The IPC is a hierarchical system for the classification of patent applications according to the different technological fields to which they belong. For the task at hand we work at the class level and thus consider 129 different

to take into account the fact that different contractors may exhibit different patenting behavior irrespective of the characteristics of the R&D work they conduct for the U.S. government.<sup>28</sup> In order to do so, we construct the variable *Propensity to patent* as the number of privately funded patents filed by a contractor in the period that we consider (2006-2012), divided by the average number of employees working for the contractor over the same period. Finally, *University* is a binary variable that reports whether the contractor is a higher-education institution or not.

## IV Empirical Strategy

We seek to estimate buyers' role in explaining R&D project outcomes. We do so by exploiting unexpected deaths of managers of federal bureaus active in innovation procurement. As mentioned earlier, using deaths as a source of exogeneity within organizations is a relatively common estimation strategy (Jäger 2017), which we exploited in an earlier work that studies US federal procurement of standardized services (Decarolis et al. 2020). For this analysis, our strategy requires first isolating the death event of relevant public managers around the time of project selection. The departure of a manager for reasons related, e.g., to job mobility or retirement is likely plagued by omitted variable bias. For that reason, we focus instead on cases of deaths, which are separations arguably less predictable than other mobility events – especially when it comes to younger individuals.

Based on the definition of relevant employees provided earlier, we count the number of deaths occurring among these employees in the six months before the contract award.<sup>29</sup> The ratio between this variable and the total number of relevant employees (in the bureau-State and year in which the contract is signed) is what we refer to as the share of relevant deaths and represents our main independent variable.<sup>30</sup> Across the 929 bureau-State-year observations in the FedScope data, the average share of relevant deaths is 0.0001, ranging from a value of zero at the first percentile to a value of 0.0021 at the 99th percentile.

---

technological fields. For additional information on the IPC see <http://www.wipo.int/classifications/ipc/en/>.

<sup>28</sup>For instance, a specific company might be on average more likely to rely on trade secrets to protect its inventions and hence more likely to forego patent protection even when a patent application can be filed.

<sup>29</sup>Regarding the six months time window, various robustness checks are presented below. Our choice is motivated by the managerial literature according to which it takes a period between 3 months and a year for newly hired employees to gain full efficiency, so-called ‘onboarding effect’, see Klein and Polin (2012).

<sup>30</sup>FedScope snapshots are taken in September, while FEVS ones in June. To account for any variation in the employment stock owing to the death occurrences before September of the same year, for contracts signed up to September, we substitute the employment stock with its lag that is unaffected by those changes. Death occurrences after June are not affecting the outcome measures, based on FEVS variables, of the current year. Outcome measures based on FEVS variables are adjusted taking their leads.

\*\*\* INSERT FIGURE 1 ABOUT HERE \*\*\*

Conditional on observing at least one death case occurring (17 percent of observations), Figure 1 shows that the variable has a well behaved power-law shaped distribution. It reveals a conceivable right-skewed distribution and a major fraction of deaths lower than 0.0005. From a geographical perspective, the share of deaths does not seem to follow a clear path. Figure 2 shows the share of contracts associated with at least one relevant death across the different States.<sup>31</sup>

\*\*\* INSERT FIGURE 2 ABOUT HERE \*\*\*

Although death-induced separations can be reasonably considered as exogenous shocks relative to procurement contract outcomes, they may not be randomly assigned across bureaus. We use a propensity score weighting approach to adjust for potential unbalancedness. Following the potential outcome literature, consider a binary variable  $Z_i$  whose value depends on whether contract  $i$  is awarded by a bureau that has experienced at least one relevant death (treated group) against none (control group). Then, conditional on covariates  $X_i$ , the propensity score describes each subject's probability of being assigned to the treatment that they received given the set of observed covariates.<sup>32</sup>

By weighting via propensity scores, we effectively compare bureaus equally likely to be assigned to each treatment group. Stated otherwise, propensity score weighting tends to make relevant deaths balanced across offices that look similar on observables. A well-recognized benefit of weighting via propensity score rather than on covariates is to reduce the curse of dimensionality and improve the estimates' precision. Similarly to Bruce et al. (2019), we use the Inverse Probability

---

<sup>31</sup>Note that our sample includes only contracts awarded in States where the awarding bureau has at least one employee. This restriction ensures that we can pinpoint the bureaus' locations, local offices, and the contracts that they are likely to supervise. In the appendix, Figure A.1 reports in detail the location of each bureau by indicating with an "X" the State in which they employ at least one white-collar worker. Furthermore, in Table A.9 we report the variation in relevant employees death events over time and bureau-state. This descriptive evidence indicates that deaths are not clustering in a few selected observations but rather scattered across multiple years and bureau-states.

<sup>32</sup>For causal comparisons, we adopt the potential outcome framework (Rubin 1974). The way in which *Relevant Deaths* are built allows us to rely on the standard Stable Unit Treatment Value Assumption (Rubin 1980), stating that the potential outcomes for each unit are unaffected by the treatment assignments of other units and each unit has potential outcomes  $\{Y_i(z), z = 0, 1\}$  corresponding to the possible treatment levels, of which only one is observed:  $Y_i = Z_i Y_i(1) + (1 - Z_i) Y_i(0)$ . Under the unconfoundedness assumption, that is,  $Y(0), Y(1) \perp Z|X$ , we have  $Pr(Y(z)|X) = Pr(Y|X, Z = z)$  for  $z : 0, 1$ , so  $\tau(x)$  is the average treatment effect (ATE) conditional on  $x : \tau(x) = E[Y(1) - Y(0)|X = x]$ . Estimation of either comparison requires the probabilistic assignment assumption,  $0 < e(X) < 1$ , which states that the study population is restricted to values of covariates for which there can be both control and treated units.



Weighting Regression Adjustment (IPWRA) method, which involves weighting the outcome measures by the inverse of the propensity score. We proceed as follows. To cope with selection on observable characteristics of buyers, we pair contracts awarded by similar triples bureau-State-year in terms of median salary, age, and the number of white-collar employees. We then perform a logistic regression of a dummy variable for relevant deaths on these characteristics and predict the propensity score  $e(\mathbf{z})$ .<sup>33</sup> Then, after weighting the outcome of treated bureaus by  $\frac{1}{e(\mathbf{z})}$  and that of control bureaus by  $\frac{1}{1-e(\mathbf{z})}$ , we estimate the following linear model:

$$\log(\mu + Y_{ijtm}) = \beta \text{ShareRelevantDeaths}_{jt} + \theta X_i + \iota_j + \kappa_t + \lambda_m + \epsilon_{ijtm}, \quad (1)$$

where  $Y_{ijtm} = [\#Patents; \#Citations; \#Claims]$  stands for our three contract outcomes for contract  $i$ , awarded by bureau-State  $j$  in year  $t$  and belonging to product category  $m$ .  $X_i$  represents contract and seller characteristics: in the baseline model, we include three variables capturing elements of the contract award procedure (*Cost Plus*, *Negotiation*, *Competed*) and three variables capturing firm features (*Small Business*, *University*, *Propensity to Patent*).<sup>34</sup> The regression models include a series of fixed effects: bureau ( $\iota_j$ ), calendar year ( $\kappa_t$ ); further,  $\lambda_m$  which, depending on the specification, are either R&D category fixed effects or also fixed effects for the stage of R&D activity. Controlling for this latter variable is of particular importance as contracts awarded to procure basic research might be characterized by a higher level of uncertainty and a lower likelihood of being associated with a patent than applied research contracts. In some specifications, we also include fixed effects for the deciles of award price and expected duration distribution. Finally, as discussed in section III, for the log transformation of our dependent variable we follow Bellégo

---

<sup>33</sup>Specifically, we generate dummies for the quantiles of the distribution of the three variables: two quantiles for Median Age, ten for Employment and five for Median Salary. The 100 variables obtained by the interactions of these three sets of dummy variables are the regressors in the Probit model. This model specification for the computation of the propensity score is in the spirit of Dehejia and Wahba (2002). In particular, the balance is checked within each stratum by applying a t-test for the equality of means. The binary covariates are not balanced for some strata (i.e., the t-test is statistically significant). Hence, we divide the sample into finer strata to search for balancedness, and we specify a model with all possible interactions. This approach satisfies the balancing property mechanically (i.e., tests for mean differences in covariates between control and comparison units are statistically insignificant) at the cost of sample reduction (i.e., the logistic regression rules out combinations with no relevant death dummy variability). We also rely on common support: we force estimation of either comparison to require the probabilistic assignment assumption,  $e(z)$ , which states that the contract population is restricted to values of covariates for which there can be both control and treated units.

<sup>34</sup>Warren (2014) shows that unexpected workload changes shift various contractual/procurement terms: less competition, more cost-plus, more renegotiation, and higher prices. As these characteristics are affected by managerial workload, they are probably also affected by managerial deaths, and they are, therefore, possibly not appropriate control variables. In the appendix, we explore this concern by excluding these variables from the sample specification. The findings are qualitatively the same of those in the baseline estimates presented next.

and Pape (2019) and use the logarithm of a small constant  $\mu$  (set equal to  $10^{-9}$ ) plus the patent count. Our choice to set  $\mu$  equal to  $10^{-9}$  corresponds to using the largest value of  $\mu$  such that the point estimate from the preferred linear model are closest to the corresponding Poisson estimate. We discuss this choice and how it affects the findings in the appendix (see Figure C.1).

\*\*\* INSERT TABLE 4 ABOUT HERE \*\*\*

To explore the soundness of our IPWRA strategy, in the next section we will discuss an extensive set of robustness checks involving both linear and Poisson models, both with and without sample weighting. Before that, however, Table 4 offers additional evidence on the effectiveness of our baseline weighting strategy. It reports the estimates of a linear probability model for the probability of observing at least one relevant death in the bureau/State/year. There are no observable bureau characteristics that significantly predict the chances of observing at least one relevant death, except for variables related to age and accomplishment, which are mechanically related to the outcome variable since they measure death occurrences within a specific sub-population selected precisely based on these variables.

\*\*\* INSERT FIGURE 3 ABOUT HERE \*\*\*

Lastly, before presenting the estimation results, it is useful to report in Figure 3 a graphical representation of the main relationship that we seek to uncover. In particular, this figure shows the relationships between the logarithm of the number of patents and the number of relevant deaths in the bureau/State in the six months prior to the award scaled by the white-collar workforce. The variables are residualized including as controls: contract features, seller features, along with bureau fixed effects, procurement category fixed effects, R&D stage fixed effects, project amount and duration fixed effects, and year fixed effects. The figure reports a binned scatterplot: each point represents a group of contracts sharing the same x- and y-coordinates. This means that each point represents the mean statistic of the residualized number of relevant deaths inside each bin. The selected number of bins minimizes the (asymptotic) integrated mean squared error following Cattaneo et al. (2019). The evidence in the figure indicates a clear, negative relationship that our baseline estimates in the next section will confirm.

## V Results

The baseline estimates of equation (1) are reported in Table 5. For each of the three outcome measures, this table presents the estimates for four model specifications that gradually expand the set of covariates. All specifications include bureau fixed effects and R&D categories fixed effects. In addition to these fixed effects, the first model includes exclusively the share of relevant deaths.<sup>35</sup> The following model includes characteristics of the contractor (propensity to patent, small business and university). The third model controls for features of the contract and awarding procedure (cost plus, negotiated, competed). Finally, the fourth model also includes fixed effects for calendar year, for the stage of R&D activity, and for bins capturing the size and duration of the project. The latter model is our preferred specification.

We observe a similar pattern across all outcome variables: deaths have a negative and highly statistically significant effect. The magnitude of the estimated coefficient declines as the specification becomes richer, but the qualitative result is stable. The estimated effects imply that a 1 percent increase in the share of relevant deaths causes a decline of 32.3 percent of patents per contract, 20.5 percent patent citations per contract and 34.3 percent patent claims per contract.

\*\*\* INSERT TABLE 5 ABOUT HERE \*\*\*

Among the other covariates, an interesting result is that the size of the contractors is associated with their propensity to innovate. Small businesses have a higher propensity to innovate along all of the three outcomes.<sup>36</sup> Regarding the other two covariates – i.e., the measure of whether the firm has filed for patents in the past and the dummy for whether it is associated with a university – both of them are not statistically significant.

The baseline estimates above are complemented by an extensive set of robustness checks and by a series of additional results useful to interpret and deepen the findings. Among the most relevant robustness checks, it is worth pointing out that the baseline estimates are qualitatively close to OLS estimates, thus implying that the sample weighting is not by itself a main driver of the findings, and to Poisson estimates, implemented through the Santos Silva and Tenreyro (2006)

---

<sup>35</sup>In the regressions, this share is scaled up by two orders of magnitudes to interpret the unit change as 1 percentage point.

<sup>36</sup>There is a large debate on programs like the U.S. SBIR that promote innovation among SMEs through public procurement, and similar initiatives have been undertaken in Europe. See Bhattacharya (2018) for an empirical study.

pseudo-Poisson model in order to account for the high-dimensional fixed effects in our favored specification. Although the magnitude of the Poisson point estimate is always larger than the corresponding IPWRA point estimate, all of the Poisson point estimates are contained within the 95 percent confidence interval of the corresponding IPWRA estimates. We leave a detailed discussion of the robustness checks in the appendix and explore in the remaining part of this section the additional results.<sup>37</sup>

The first step to better understand our main findings on relevant deaths is to explore how they vary by the bureau workforce size. We find that the smaller the bureau, the more impactful the share of manager deaths is. In particular, Table 6 reports the estimates obtained by gradually excluding the larger bureaus. That is, in the estimates for the number of patents, column 1 contains the full sample, column 2 excludes from it the observations for bureau/State/year at or above the 99th percentile of the distribution of relevant employees. The next two columns further exclude observations at or above the 90th percentile (column 3) and the 75th percentile (column 4).

\*\*\* INSERT TABLE 6 ABOUT HERE \*\*\*

In terms of the size of the relevant employees, these three cutoffs correspond to 7,716, 2,169, and 1,156 employees respectively.<sup>38</sup> The same approach is adopted for the other two outcome measures and the results are reported in columns 5-12. There is a trade-off in making the sample more and more concentrated on small offices: as the precision with which we can link the death of a relevant employee to the procurement activity increases, both the chance of observing a death in the smaller offices and the chances that the (fewer) contracts awarded by smaller offices generate a patent decrease. It is therefore remarkable that, across the various subsamples explored in Table 6, the results are qualitatively stable and display a tendency toward higher magnitudes when focusing on smaller bureaus. Indeed, for all three outcome variables the estimates obtained with the smaller subsample are about twice those of the baseline sample.

\*\*\* INSERT TABLE 7 ABOUT HERE \*\*\*

---

<sup>37</sup>Appendix C reports most of the robustness checks. For convenience, these results are subdivided in six groups depending on whether the robustness analysis involves: 1) measurement of the dependent variable; 2) measurement of the main independent variable; 3) the set of regression controls; 4) the estimation approach; 5) methods to conduct inference; and 6) sample selection criteria. The latter set of robustness checks is also explored in appendix A where we focus on the set of filters implemented to select the sample.

<sup>38</sup>Additional results in the web appendix (Table C.7) expand this analysis to a different method for splitting the sample. The results are qualitatively similar to those presented in the text in Table 6.

The next step entails exploring the channels of the effect. In Table 7, we look both at the timing of death events relative to the stage of the contract and at the role of different employees in panel (a) as well as at the role of firms in panel (b). The estimates in panel (a) show the baseline estimates of columns 4, 8 and 12 in Table 5, but with a different measure of employees' deaths. In the baseline, we look at relevant death occurrences in the six months *before* the contract is awarded. This is aimed at capturing the typical period of the tendering procedure design and execution, up to the selection of the winning contractor and contract preparation. However, the post awarding contract management phase might also be relevant if managing the contract and monitoring the private contractors can influence the likelihood that patents will originate from the contract. The first row of Table 7, by looking at relevant deaths during the six months *after* the contract is awarded, indicates that there is only weak evidence for this monitoring channel: the estimated coefficient in column (1) is an order of magnitude smaller than that of the baseline and with a lower statistical significance. The relatively lower importance of the ex post monitoring and contract management phase is likely linked to the intrinsic difficulty for contracting officers of to monitor the advancement of research projects, compared to more standard procurement.

The second row of the table reports the effect of white-collar deaths without conditioning on their relevance (but still in the six-month period before contract award). Contrary to the case of the relevant deaths, there is no effect on patents or citations and a small, weakly significant effect on claims. Finally, to further explore the role of selection, we present in panel (b) of the same table estimates inclusive of firm fixed effects.<sup>39</sup> Relative to the baseline estimates, the smaller sample is due to the requirement of having at least two contracts per firm. Within this sample, the estimates concerning patents, citations and claims indicate a similar effect relative to the baseline. This result implies that, even within the same contractor, being exposed to an office experiencing a relevant death leads to worse procurement outcomes in terms of innovation.

Although the main result is robust to the inclusion of contractor fixed effects, this does not rule out selection of weaker contractors as a channel through which deaths affect outcomes. Indeed, holding contractors constant merely controls for the overall quality of contractors, not for how suited a particular contractor is for a specific contract. Thus, although a contractor may look good on paper, the results might be driven by a manager's death leading to a mismatch between contracts and contractors. This misallocation could be driven by the loss of some specific knowledge of the

---

<sup>39</sup>We further expand this analysis in additional results reported in the web appendix. Table C.12 reports the baseline regressions estimated using firm fixed effects in all specifications and reporting heteroscedastic robust standard errors.

deceased manager on some contracts.<sup>40</sup>

An interesting insight on the fact that the likely channel for the effect that we uncovered is the disruption of specialized human capital can be obtained by looking at how our estimates change between the DoD departments. Within the DoD, the acquisition process takes place differently according to Rendon et al. (2012). On the one hand, the Department of Army and the Department of Air Force solicit, assign, and monitor procurement projects at the installation level via project managers (i.e., contracting officers) with technical - and not only administrative - knowledge who also rely on project teams in managing acquisitions more often. On the other hand, for the Department of Navy, the procurement process management occurs at the regional level and is carried out by contracting officers mostly not equipped with technical skills. The role of project managers is thus more relevant for the former. In our data, this feature turns into heterogeneous effects of death within the DoD purchasing units. R&D purchases made by the Air Force and Army are more innovative as they are associated with more patents per project (0.16 versus 0.08) and per million dollar of R&D spending (2.4 versus 1.4 percent). Such relevance of the features and the organization of these purchasing units' human resources makes them likewise more exposed to death events. Technical skills are too specific to be replaced effectively and quickly after a fatal separation, and this makes the Navy less affected by the on-boarding effect of the replacements than the Air Force and Army. This is evident from an auxiliary analysis in which we replicate the baseline regression from Columns 4, 8, and 12 of Table 5 and interact relevant death with fixed effects for the Air Force and Army, Navy, Others. For all three outcomes, the interaction term hold negative and significant only with the Air Force and Army indicator: the death are disruptive in terms of less patents, less citations per patent and less claims per patent only for the contracting units where the procurement process is managed at the installation level. This results is highly suggestive that the main mechanism behind the impact of a death event is the disruption of specialized and hard to replace human capital and not a general shock in the workload of the awarding office. Nevertheless, we shall stress that we cannot fully rule out other channels. For instance, our effects might result from a lower scrutiny of all contracts that were concomitantly under consideration for award.

\*\*\* INSERT TABLE 8 ABOUT HERE \*\*\*

We conclude with a short description of how bureau characteristics – as measured from the FEVS

---

<sup>40</sup>This interpretation is also in line with Warren (2014) and Limodio (2019) who stress the importance of task-specific knowledge.

– are associated with both deaths and procurement outcomes. Through a principal component analysis, we reduce the 8 questions in the FEVS section about the work unit to two new variables, one that essentially captures cooperation (as this component weights essentially only the 2 questions concerning cooperation) and one that covers skills and incentives. We indicate these two factors as *Cooperation* and *Skill/Incentives*. We run the same models of Table 5, allowing these two new variables to enter both directly and as interactions with Relevant Deaths. Relevant Deaths remains significant and large, even above those in Table 5.<sup>41</sup> The interaction terms are not significant, while the direct effect of cooperation is positive and significant across all outcomes.

These results are particularly interesting if compared to the ones in Decarolis et al. (2020). In the context of service contracts not involving R&D, they find that death events significantly interact with the FEVS measure of bureau’s cooperation. This difference relative to our findings might be driven by the more limited variability in our measures of bureau characteristics: most of our data are from the DoD, while they observe a larger set of agencies and bureaus. Alternatively, it might be that for R&D procurement within-bureau cooperation is a more important determinant of successful procurement, than in the case of the procurement of simpler services. Such an interpretation would indeed be consistent with the large work-teams of individuals with heterogeneous competences that the R&D procurement activity requires and the fact that any sudden loss of human capital within such groups is harmful for innovation outcomes, regardless of the degree of bureau cooperation. That is, while cooperation by itself helps achieving better outcomes, it is not a feature that allows lessening (or bolstering) the negative impacts of a death event, with the disruption of competences that it brings. Thus, even the best-performing organizations – in terms of the FEVS measures – are affected by deaths to the same extent as weaker organizations. This fact is also particularly important to rule out the alternative explanation of a general disruption effect (e.g., because of psychological stress) due to the loss of a colleague. Indeed, if emotional distress were the main channel behind the negative effect of a death event, we would have expected that more collaborative bureaus would have fared better than less collaborative ones in coping with the disruption.

---

<sup>41</sup>The larger magnitude might be either an indication of the usefulness of controlling for these bureau characteristics or, on the contrary, a bias introduced by including potentially endogenous variables. Although the presence of bureau fixed effects makes the latter case unlikely, we prefer to consider the more conservative estimates in Table 5 as our main estimates.

## VI Conclusions

The paper shows that public buyers play a very significant role in affecting the success of innovation procurement, as measured by the number and quality of the patents generated. Buyer’s role is particularly important in the pre-award procurement design phase, although to a lower degree it also matters in the following contract management phase.

Overall, these results suggest that concerns on the ability of public buyers to effectively manage the procurement of complex innovations and to ‘pick winners’ in technology races were well placed, and represent a preliminary but clear indication of the large potential benefits of investing in the quality of public buyers of innovation through a greater professionalization of this activity, as recently advocated by [Saussier and Tirole \(2015\)](#) for public procurement in general.<sup>42</sup>

It is rather remarkable that we found our results within an institutional setting that is typically considered well organized. The lack of resiliency to death events of even large bureaus of the DoD is troublesome as one would have assumed the presence in these organizations of adequate mechanisms to deal with this type of shocks. By finding that this is not the case, our study provides evidence on the need to develop and implement such mechanisms. Evaluating the costs and benefits of alternative mechanisms is beyond the scope of this study. Nevertheless, our findings on the timings of deaths are useful to narrow down interventions that can affect the right phase of the contract: for instance, having a speedier on-boarding of replacement managers is crucial if the death socks strikes during the design stage of the contract. Similarly, our results on bureau characteristics suggest that policies improving the cooperation levels within the office will help innovation procurement.

## References

- Albert, M., Avery, D., Narin, F., and McAllister, P. (1991). Direct validation of citation counts as indicators of industrially important patents. *Research Policy*, 20(3):251–259.
- Aschhoff, B. and Sofka, W. (2009). Innovation on demand: Can public procurement drive market success of innovations? *Research Policy*, 38(8):1235–1247.

---

<sup>42</sup>They report a recent study by the *Union des groupements d’achats publics* (UGAP, French Public Procurement Grouping Union) revealing that 63 percent of French public buyers do not have a legal profile and 61 percent of public buyers have no prior experience in the field. Only 39 percent of public buyers undertook some form of course or training resulting in qualification in the field of purchasing.



- Azoulay, P., Li, D., Graff Zivin, J. S., and Sampat, B. N. (2018). Public R&D investments and private-sector patenting: Evidence from NIH funding rules. *The Review of Economic Studies*, 86(1):117–152.
- Bajari, P. and Tadelis, S. (2001). Incentives versus transaction costs: A theory of procurement contracts. *The RAND Journal of Economics*, 32(3):387–407.
- Bandiera, O., Prat, A., and Valletti, T. (2009). Active and passive waste in government spending: Evidence from a policy experiment. *American Economic Review*, 99(4):1278–1308.
- Bellégo, C. and Pape, L. (2019). Dealing with logs and zeros in regression models. *Political Methods: Quantitative Methods eJournal*.
- Bessen, J. (2008). The value of U.S. patents by owner and patent characteristics. *Research Policy*, 37(5):932–945.
- Best, M. C., Hjort, J., and Szakonyi, D. (2017). Individuals and organizations as sources of state effectiveness. NBER Working Paper 23350, National Bureau of Economic Research, Cambridge, MA.
- Bhattacharya, V. (2018). An empirical model of R&D procurement contests: An analysis of the DOD SBIR program. Working Paper, Northwestern University, Evanston.
- Bloom, N. and Van Reenen, J. (2007). Measuring and Explaining Management Practices Across Firms and Countries. *The Quarterly Journal of Economics*, 122(4):1351–1408.
- Bruce, J. R., de Figueiredo, J. M., and Silverman, B. S. (2019). Public contracting for private innovation: Government capabilities, decision rights, and performance outcomes. *Strategic Management Journal*, 40(4):533–555.
- Buccioli, A., Camboni, R., and Valbonesi, P. (2017). Buyers’ ability in public procurement: A structural analysis of Italian medical devices. Working Paper.
- Cabral, L. M. B., Cozzi, G., Denicol, V., Spagnolo, G., and Zanza, M. (2006). Procuring Innovation. CEPR Discussion Papers 5774, C.E.P.R. Discussion Papers.
- Carril, R. and Duggan, M. (2018). The impact of industry consolidation on government procurement: Evidence from department of defense contracting. NBER Working Paper 25160, National Bureau of Economic Research, Cambridge, MA.
- Carril, R. and Duggan, M. (2020). The Impact of Industry Consolidation on Government Procurement: Evidence from Department of Defense Contracting. *Journal of Public Economics*, forthcoming.
- Cattaneo, M. D., Crump, R. K., Farrell, M. H., and Feng, Y. (2019). On binscatter. *arXiv preprint arXiv:1902.09608*.
- Che, Y.-K., Iossa, E., and Rey, P. (2021). Prizes versus contracts as incentives for innovation. *Review of Economic Studies*.
- Clemens, J. and Rogers, P. (2020). Demand shocks, procurement policies, and the nature of medical inno-

- vation: Evidence from wartime prosthetic device patents. Working Paper 26679, National Bureau of Economic Research.
- Corredoira, R. A., Goldfarb, B. D., and Shi, Y. (2018). Federal funding and the rate and direction of inventive activity. *Research Policy*, 47(9):1777–1800.
- Cozzi, G. and Impullitti, G. (2010). Government spending composition, technical change, and wage inequality. *Journal of the European Economic Association*, 8(6):1325–1358.
- de Rassenfosse, G., Jaffe, A., and Raiteri, E. (2019a). The procurement of innovation by the U.S. Government. *PLOS ONE*, 14(8).
- de Rassenfosse, G. and Jaffe, A. B. (2017). Patent citation data in social science research: Overview and best practices. *Journal of the Association for Information Science and Technology*, 68(6):1360–1374.
- de Rassenfosse, G. and Jaffe, A. B. (2018). Are patent fees effective at weeding out low-quality patents? *Journal of Economics & Management Strategy*, 27(1):134–148.
- de Rassenfosse, G., Pellegrino, G., and Raiteri, E. (2019b). Knowledge diffusion through the patent system: Evidence from the invention secrecy act. Technical report.
- Decarolis, F., Giuffrida, L. M., Iossa, E., Mollisi, V., and Spagnolo, G. (2020). Bureaucratic competence and procurement outcomes. *Journal of Law, Economics and Organization*, forthcoming.
- Dehejia, R. H. and Wahba, S. (2002). Propensity score-matching methods for nonexperimental causal studies. *The Review of Economics and Statistics*, 84(1):151–161.
- European Commission, (2020). ProcurCompEU-European Competency Framework for Public Procurement Professionals. Technical report, Directorate-General for Internal Market, Industry, Entrepreneurship and SMEs.
- Flamm, K. (1987). *Targeting the computer: Government support and international competition*. The Brookings Institution.
- GAO (2017). Adopting best practices can improve innovation investments and management. Technical report, GAO-17-499, US Government Accountability Office.
- GAO (2019a). Dod should comprehensively assess how its policies affect the defense industry. Technical report, GAO-19-406, US Government Accountability Office.
- GAO (2019b). Information on workforce, organizational structure, and budgeting for selected programs. Technical report, GAO-19-209, US Government Accountability Office.
- Gavrilov, L. A. and Gavrilova, N. S. (2011). Mortality measurement at advanced ages: A study of the social security administration death master file. *North American Actuarial Journal*, 3:432–447.
- Giuffrida, L. M. and Rovigatti, G. (2018). Can the private sector ensure the public interest? Evidence from Federal procurement. ZEW Discussion Paper No. 18-045, ZEW - Centre for European Economic Research, Mannheim.

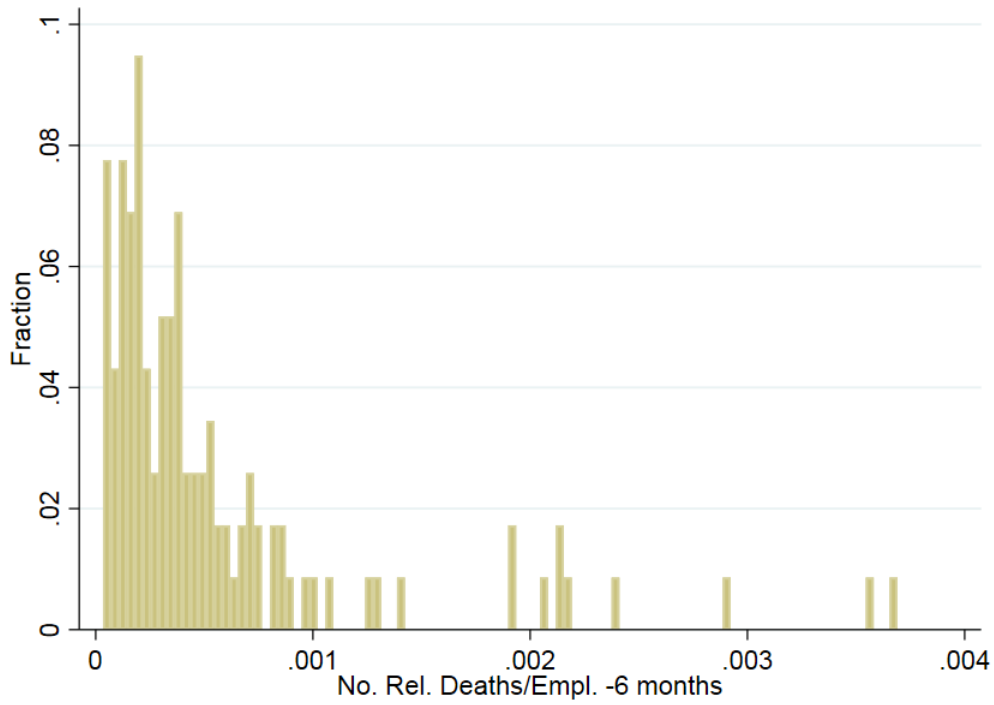
- Gross, D. P. et al. (2019). *The Consequences of Invention Secrecy: Evidence from the USPTO Patent Secrecy Program in World War II*. National Bureau of Economic Research.
- Guerzoni, M. and Raiteri, E. (2015). Demand-side vs. supply-side technology policies: Hidden treatment and new empirical evidence on the policy mix. *Research Policy*, 44(3):726–747.
- Harhoff, D., Scherer, F. M., and Vopel, K. (2003). Citations, family size, opposition and the value of patent rights. *Research Policy*, 32(8):1343–1363.
- Howell, S. T. (2017). Financing innovation: Evidence from R&D grants. *American Economic Review*, 107(4):1136–1164.
- Jäger, S. (2017). How substitutable are workers? Evidence from worker deaths. Working paper, Harvard University, Cambridge, MA.
- Kang, K. and Miller, R. A. (2017). Winning by default: Why is there so little competition in government procurement? Working paper, Carnegie Mellon University, Pittsburgh.
- Klein, H. J. and Polin, B. (2012). Are organizations on board with best practices onboarding. *The Oxford handbook of organizational socialization*, 54:267–287.
- Lanjouw, J. O. and Schankerman, M. (2004). Patent quality and research productivity: Measuring innovation with multiple indicators. *The Economic Journal*, 114:441–465.
- Lee, S. H. (1997). Protecting the private inventor under the peacetime provisions of the invention secrecy act. *Berkeley Tech. LJ*, 12:345.
- Li, D., Azoulay, P., and Sampat, B. N. (2017). The applied value of public investments in biomedical research. *Science*, 356(6333):78–81.
- Liebman, J. B. and Mahoney, N. (2017). Do expiring budgets lead to wasteful year-end spending? Evidence from Federal procurement. *American Economic Review*, 107(11):3510–49.
- Liebreich, M. (2018). Why mariana mazzucato is wrong about the entrepreneurial state.
- Limodio, N. (2019). Bureaucrat Allocation in the Public Sector: Evidence from the World Bank. Technical report.
- Maurer, S. M. and Scotchmer, S. (2004). Procuring knowledge. *Libecap Gary D. (Ed.) Intellectual Property and Entrepreneurship (Advances in the Study of Entrepreneurship, Innovation and Economic Growth*, 15:1–31.
- Mazzucato, M. (2013). *The Entrepreneurial State: Debunking Public vs. Private Myths in Risk and Innovation*. London: Anthem Press.
- McEwen, J., Bloch, D., and Gray, R. (2012). *Intellectual property in government contracts: protecting and enforcing IP at the state and federal level*. Oxford University Press.
- Merges, R. P., Menell, P. S., and Lemley, M. A. (2003). *Intellectual property in the new technological age: 2003*. Aspen Publishers, New York.

- Mingardi, A. (2015). A Critique of Mazzucato’s Entrepreneurial State. *Cato Journal*, 35(3):603–625.
- Nelson, R. R. (1982). *Government and Technical Progress: A cross-industry analysis*. Pergamon Press.
- Nelson, R. R. and Langlois, R. N. (1983). Industrial Innovation Policy: Lessons from American History. *Science*, 219(4586):814–818.
- OECD (2017). Public procurement for innovation: Good practices and strategies. OECD Publishing, Paris.
- Raiteri, E. (2018). A time to nourish? Evaluating the impact of public procurement on technological generality through patent data. *Research Policy*, 47(5):936–952.
- Rasul, I. and Rogger, D. (2016). Management of bureaucrats and public service delivery: Evidence from the Nigerian Civil Service. *The Economic Journal*, 128(608):413–446.
- Rendon, R., Apte, U., and Apte, A. (2012). Services acquisition in the dod: A comparison of management practices in the army, navy, and air force. *Defense Acquisition Research Journal*, 19.
- Rubin, D. (1974). Estimating causal effects of treatments in randomized and nonrandomized studies. *Journal of Educational Psychology*, 66(5):688–701.
- Rubin, D. (1980). Estimating causal effects of treatments in randomized and nonrandomized studies. *Biometrics*, 36(2):293–298.
- Santos Silva, J. and Tenreyro, S. (2006). The log of gravity. *The Review of Economics and Statistics*, 88(4):641–658.
- Santos Silva, J. and Tenreyro, S. (2010). On the existence of the maximum likelihood estimates in poisson regression. *Economics Letters*, 107(2):310 – 312.
- Saussier, S. and Tirole, J. (2015). Strengthening the efficiency of public procurement. *Note du conseil d’analyse economique*, 22(3):1–12.
- Slavtchev, V. and Wiederhold, S. (2016). Does the technological content of government demand matter for private R&D? *American Economic Journal: Macroeconomics*, 8(2):45–84.
- Takalo, T., Tanayama, T., and Toivanen, O. (2013a). Estimating the benefits of targeted r&d subsidies. *The Review of Economics and Statistics*, 95(1):255–272.
- Takalo, T., Tanayama, T., and Toivanen, O. (2013b). Market failures and the additionality effects of public support to private r&d: Theory and empirical implications. *International Journal of Industrial Organization*, 31(5):634 – 642.
- Takalo, T., Tanayama, T., and Toivanen, O. (2017). Welfare effects of r&d support policies. *mimeo*.
- Trajtenberg, M. (1990). A penny for your quotes: Patent citations and the value of innovations. *The RAND Journal of Economics*, 21(1):172–187.
- USPTO (2019). *Manual of Patent Examining Procedure*. US Department of Commerce, Patent and Trademark Office.

Warren, P. L. (2014). Contracting officer workload, incomplete contracting, and contractual terms. *The RAND Journal of Economics*, 45(2):395–421.

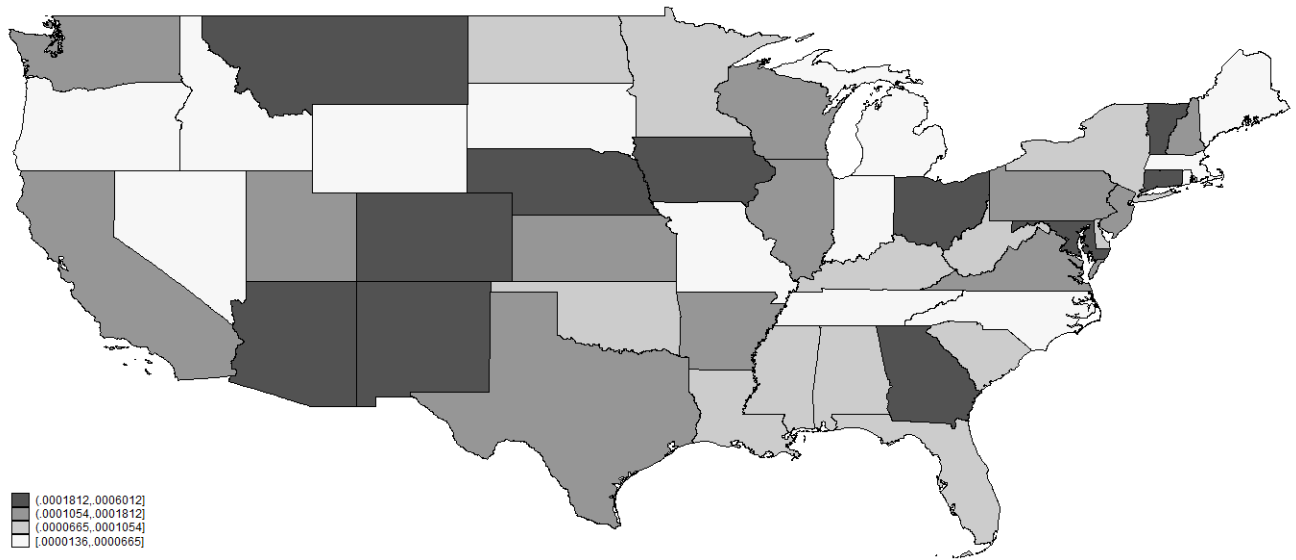
Westlake, S. (2014). Interrogating the entrepreneurial state. *The Guardian*, 11 November.

Figure 1: Distribution of Relevant Deaths



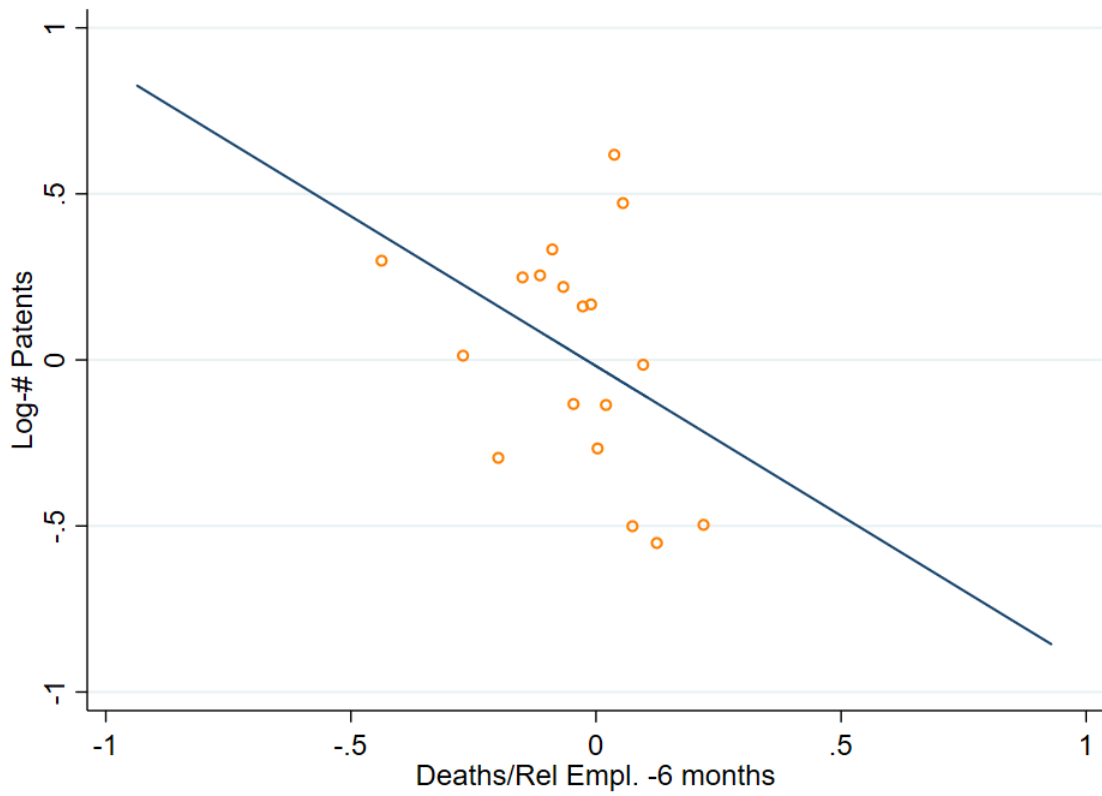
Notes: the bins represent the share of relevant deaths for the 13 percent of bureau/State/year triple with at least one relevant death. This figure excludes two outliers (> of 0.5 percent of deaths), which are *Space and Naval Warfare Systems Command* in Florida for 2008 and *U.S. Army Corps of Engineers* in Arizona for 2012.

Figure 2: Share of Contracts Associated with at least One Relevant Death



Notes: Share of contracts by State associated with at least one relevant death.

Figure 3: Scatterplot



Notes: Binned scatterplot. The selected number of bins is optimal in minimizing the (asymptotic) integrated mean squared error following Cattaneo et al. (2019). Each point represents a graphical representation of the relationship between the logarithm of the number of patents associated with a contract and the share of relevant deaths.

Table 1: U.S. FEDERAL AGENCIES AND R&D CONTRACTS

Agency	# of Contracts	Percent	Contract Value (\$ billion)	Percent
Dep. Air Force	1,034	30.15	8.77	58.47
Dep. Army	819	23.88	1.82	12.13
Dep. Navy	1,103	32.16	3.65	24.33
NASA	323	9.42	0.39	2.6
Other agencies	151	4.40	0.48	2.8

*Notes:* Contracts are grouped by DoD subagencies, NASA, and other agencies. The table reports the number of contracts awarded and their value in USD billion.



Table 2: SUMMARY STATISTICS

## (a) Contract Level

	Mean	50th	S.D.	Obs.	Source
Awarding Price (in \$1,000)	975	245	3,156	1,750	FPDS
Final Cost (in \$1,000)	6,184	678	99,970	1,750	FPDS
Expected Duration (Days)	560	370	424	1,750	FPDS
Total Duration (Days)	928	822	594	1,750	FPDS
Cost Plus (dummy)	0.79	-	0.41	1,750	FPDS
Negotiation (dummy)	0.36	-	0.48	1,750	FPDS
Competed (dummy)	0.91	-	0.29	1,750	FPDS
# Patents	0.13	0.00	1.11	1,750	3PFL
# Citations	0.14	0.00	1.20	1,750	3PFL
# Claims	0.15	0.00	0.68	1,750	3PFL

## (b) Buyer Level

	Mean	50th	S.D.	Obs.	Source
Total Employment	1,962.20	1,216.00	2,539.00	335	FedScope
Relevant Employment	930.20	445.00	1,259.20	335	FedScope
Median Age	7.04	7.00	0.20	335	FedScope
Median Salary	7.49	7.00	1.12	335	FedScope
Cooperation	0.75	0.75	0.03	335	FEVS
Skill	0.55	0.55	0.03	335	FEVS
Incentives	0.44	0.44	0.03	335	FEVS

## (c) Seller Level

	Mean	50th	S.D.	Obs.	Source
Propensity to patent	0.63	0.24	0.93	345	USPTO
Small (dummy)	0.32	-	0.45	345	FPDS
University (dummy)	0.19	-	0.40	345	3PFL

*Notes:* *Awarding Price* and *Expected Duration* report the award amount (in \$) and the expected duration (in days) of the contract at the time of award; *Final Cost* and *Total Duration* represent the actual cost and duration of the R&D projects, respectively; *Cost plus* equals one if the contract pricing format is cost plus and zero if it is fixed price; *Negotiation* is a dummy variable indicating whether the contract uses negotiated procedures (i.e., the contract is awarded on the basis of a direct agreement with a contractor, after solicitation of a number of sources); *Competed* indicates the contract is available for competition; *Total Employment* reports the number of white collars in the bureau-State; *Relevant Employment* reports the number of relevant (white-collar) employees. FedScope data report bureau's *Median Age* and *Median Salary* in bins: 1 point S.D. in *Median Age* represents 5 years and category 1 coincides with "Less than 20 years"; 1 point S.D. in *Median Salary* \$10,000 and category 1 coincides with "Less than \$20,000". Accordingly, sample average *Median Age* and *Median Salary* are 45.15 and 84.900, respectively. *Propensity to patent* is the number of privately funded patents filed by a contractor in the period that we consider (2006-2012), divided by the average number of employees working for the contractor over the same period. *Small* is an indicator variable equal to one if the seller meets the small business size standard for award to a small business that is applicable to the contract. *University* is a binary variable that reports whether the contractor is a higher-education institution or not.

Table 3: FEDERAL R&D PROCUREMENT CATEGORIES

R&D Category	# Contracts	# Patents	Award Value (in 1,000,000\$)
AB1 - "Community Service/Development: Crime Prevention/Control"	4	0	5
AB9 - "Community Service/Development: Other"	32	2	59
AC1 - "Defense System: Aircraft"	165	14	1,051
AC2 - "Defense System: Missile/Space Systems"	139	30	813
AC3 - "Defense System: Ships"	9	1	7
AC4 - "Defense System: Tank/Automotive"	13	0	22
AC5 - "Defense System: Weapons"	95	0	252
AC6 - "Defense System: Electronics/Communication Equipment"	378	83	3,260
AC9 - "Defense System: Miscellaneous Hard Goods"	14	1	35
AD2 - "Defense Other: Services"	379	16	768
AD4 - "Defense Other: Textiles/Clothing/Equipage"	11	1	6
AD9 - "Defense Other: Other"	1,186	100	1,975
AE3 - "Economic Growth: Manufacturing Technology"	20	7	31
AG9 - "Energy: Other"	7	6	54
AH3 - "Environmental Protection: Water Pollution"	2	0	3
AH9 - "Environmental Protection: Other"	110	3	98
AJ1 - "General Science/Technology: Physical Sciences"	98	18	190
AJ2 - "General Science/Technology: Mathematical/Computer Sciences"	16	1	99
AJ3 - "General Science/Technology: Environmental Sciences"	17	0	24
AJ4 - "General Science/Technology: Engineering"	90	5	517
AJ5 - "General Science/Technology: Life Sciences"	14	6	23
AJ9 - "General Science/Technology: Other"	18	2	38
AN1 - "Medical: Biomedical"	79	17	370
AN7 - "Medical: Specialized Medical Services"	2	0	4
AN9 - "Medical: Other"	4	0	1
AR1 - "Space: Aeronautics/Space Technology"	128	2	124
AR2 - "Space: Science/Applications"	6	18	4,055
AR3 - "Space: Flight"	5	0	63
AZ1 - "Other Research and Development"	389	37	1,087

*Notes:* The table shows descriptive statistics for 3-digit R&D categories. We report the associated # of contracts, # of patents and the overall award amount in our sample.

Table 4: EXOGENEITY TEST FOR LAGGED DEATHS

	Relevant Deaths 6m before				Relevant Deaths 6m before			
	(1)	(2)	(3)	(4)	(5)	(6)	(7)	(8)
log Budget	-0.00 (0.00)	-0.00 (0.00)	-0.00 (0.00)	-0.00 (0.00)	-0.00 (0.00)	-0.00 (0.00)	-0.00 (0.00)	-0.00 (0.00)
log # Contracts	0.00 (0.00)	0.00 (0.00)	0.00 (0.00)	0.00 (0.00)	0.00 (0.00)	0.00 (0.00)	0.00 (0.00)	0.00 (0.00)
Median Age		-0.18*** (0.04)	-0.18** (0.06)	-0.02 (0.14)		-0.35*** (0.09)	-0.45*** (0.11)	-0.52** (0.20)
Median Education		-0.01 (0.01)	-0.01 (0.01)	0.02 (0.01)		0.06 (0.04)	0.07* (0.04)	0.08 (0.05)
Median LOS		0.03 (0.02)	0.04 (0.03)	0.00 (0.04)		-0.01 (0.06)	-0.01 (0.06)	-0.01 (0.06)
Median Salary		0.00 (0.03)	0.04 (0.04)	0.08 (0.06)		0.16 (0.09)	0.15 (0.09)	0.11 (0.08)
Median WF Composition		0.03 (0.22)	0.12 (0.26)	-0.39 (0.34)		0.09 (0.37)	0.03 (0.32)	-0.40 (0.51)
Accomplishment			-1.08** (0.49)	-2.71*** (0.60)			-1.93** (0.67)	-3.26*** (0.84)
Appreciation			1.01** (0.46)	0.78* (0.44)			1.52 (1.01)	-0.67 (0.75)
Level of Workload			-0.02 (0.31)	-0.52* (0.24)			-0.22 (0.40)	0.07 (0.47)
Physical condition workplace			0.26** (0.11)	0.35 (0.23)			0.35 (0.32)	0.30 (0.38)
Integration policy				-0.12 (0.25)				0.13 (0.48)
Health Security				0.23 (0.30)				-0.05 (0.66)
Good Place to work				1.19* (0.62)				1.14 (0.88)
Balance wotk/life				0.21 (0.55)				0.06 (0.74)
Job Satisfaction				1.18** (0.55)				2.40** (0.92)
Pay Satisfaction				-0.77* (0.42)				-1.87** (0.84)
Year FEs	Yes	Yes	Yes	Yes	Yes	Yes	Yes	Yes
Bureau FEs	No	No	No	No	Yes	Yes	Yes	Yes
Adj. R-squared	0.01	0.01	0.01	0.01	0.02	0.02	0.03	0.02
Observations	669	669	669	669	669	669	669	669

Notes: \*\*\* p<0.01, \*\* p<0.05, \* p<0.1. The table presents four nested sets of possible predictors (1)–(4) of the bureau-year relevant death variable. All OLS estimates include year fixed effects. In addition, columns (5)–(8) include bureau-State fixed effects.

Table 5: BASELINE ESTIMATES

	Log # Patents				Log # 3Y Citations				Log # Claims			
	(1)	(2)	(3)	(4)	(5)	(6)	(7)	(8)	(9)	(10)	(11)	(12)
Share Rel. Deaths	-0.64*** (0.084)	-0.60*** (0.12)	-0.55*** (0.091)	-0.39** (0.16)	-0.39*** (0.045)	-0.36*** (0.071)	-0.36*** (0.061)	-0.23** (0.089)	-0.66*** (0.085)	-0.61*** (0.12)	-0.57*** (0.093)	-0.42** (0.17)
Small Business		0.70** (0.28)	0.64* (0.34)	1.17*** (0.31)		0.70** (0.31)	0.68* (0.35)	1.16** (0.44)		0.70** (0.28)	0.63* (0.34)	1.16*** (0.31)
Propensity to patent		0.44 (0.42)	0.43 (0.43)	0.48 (0.42)		0.28 (0.35)	0.27 (0.35)	0.27 (0.32)		0.45 (0.44)	0.45 (0.44)	0.49 (0.43)
University		-0.20 (0.37)	-0.12 (0.42)	0.39 (0.34)		-0.098 (0.24)	-0.026 (0.30)	0.28 (0.30)		-0.20 (0.37)	-0.12 (0.42)	0.40 (0.35)
Bureau FEs	Yes	Yes	Yes	Yes	Yes	Yes	Yes	Yes	Yes	Yes	Yes	Yes
R&D Category FEs	Yes	Yes	Yes	Yes	Yes	Yes	Yes	Yes	Yes	Yes	Yes	Yes
Contract Features	No	No	Yes	Yes	No	No	Yes	Yes	No	No	Yes	Yes
R&D Stage FEs	No	No	No	Yes	No	No	No	Yes	No	No	No	Yes
Amount&Duration FEs	No	No	No	Yes	No	No	No	Yes	No	No	No	Yes
Calendar Year FEs	No	No	No	Yes	No	No	No	Yes	No	No	No	Yes
Adj. R-squared	0.02	0.03	0.03	0.07	0.01	0.01	0.01	0.03	0.02	0.03	0.03	0.06
Observations	1749.00	1749.00	1749.00	1749.00	1749.00	1749.00	1749.00	1749.00	1749.00	1749.00	1749.00	1749.00

\*  $p < .1$ , \*\*  $p < .05$ , \*\*\*  $p < .01$

Notes: \*\*\*  $p < 0.01$ , \*\*  $p < 0.05$ , \*  $p < 0.1$ . Standard errors are two-way clustered by bureau and R&D category and are in parentheses. Contract Features indicates that the model controls for features of the contract and award procedure (cost plus, negotiated, competed). Amount and Duration FEs represent deciles for contract value and duration.

Table 6: DIFFERENT SIZE BUREAUS

	Log # Patents				Log # 3Y Citations				Log # Claims			
	(1)	(2)	(3)	(4)	(5)	(6)	(7)	(8)	(9)	(10)	(11)	(12)
Share Rel. Deaths	-0.39** (0.16)	-0.40** (0.16)	-0.64** (0.24)	-1.28*** (0.25)	-0.23** (0.089)	-0.24** (0.087)	-0.32 (0.22)	-1.12*** (0.17)	-0.42** (0.17)	-0.43** (0.17)	-0.68** (0.24)	-1.29*** (0.25)
Small Business	1.17*** (0.31)	1.19*** (0.32)	1.28*** (0.35)	0.82*** (0.20)	1.16** (0.44)	1.18** (0.45)	1.14** (0.49)	0.96** (0.42)	1.16*** (0.31)	1.18*** (0.32)	1.27*** (0.35)	0.86*** (0.21)
Propensity to patent	0.48 (0.42)	0.49 (0.44)	0.38 (0.54)	-0.23 (0.33)	0.27 (0.32)	0.28 (0.33)	0.20 (0.43)	-0.29 (0.21)	0.49 (0.43)	0.50 (0.45)	0.40 (0.54)	-0.25 (0.32)
University	0.39 (0.34)	0.41 (0.36)	0.062 (0.28)	0.99*** (0.19)	0.28 (0.30)	0.28 (0.31)	-0.070 (0.18)	0.54* (0.28)	0.40 (0.35)	0.42 (0.36)	0.051 (0.28)	1.02*** (0.19)
Bureau FEs	Yes	Yes	Yes	Yes	Yes	Yes	Yes	Yes	Yes	Yes	Yes	Yes
R&D Category FEs	Yes	Yes	Yes	Yes	Yes	Yes	Yes	Yes	Yes	Yes	Yes	Yes
R&D Stage FEs	Yes	Yes	Yes	Yes	Yes	Yes	Yes	Yes	Yes	Yes	Yes	Yes
Contract Features	Yes	Yes	Yes	Yes	Yes	Yes	Yes	Yes	Yes	Yes	Yes	Yes
Amount&Duration FEs	Yes	Yes	Yes	Yes	Yes	Yes	Yes	Yes	Yes	Yes	Yes	Yes
Calendar Year FEs	Yes	Yes	Yes	Yes	Yes	Yes	Yes	Yes	Yes	Yes	Yes	Yes
Adj. R-squared	0.07	0.07	0.09	0.04	0.03	0.03	0.05	0.03	0.06	0.07	0.09	0.03
Observations	1749.00	1718.00	1327.00	620.00	1749.00	1718.00	1327.00	620.00	1749.00	1718.00	1327.00	620.00

\*  $p < .1$ , \*\*  $p < .05$ , \*\*\*  $p < .01$

Notes: \*\*\*  $p < 0.01$ , \*\*  $p < 0.05$ , \*  $p < 0.1$ . Standard errors are two-way clustered by bureau and R&D category and are in parentheses. Columns 1, 5, 9 correspond to columns 4, 8 and 12 in Table 5. Then, columns 2, 6, 10 exclude all those observations pertaining bureau/State/year at or above the 99th percentile of the distribution of relevant employees; columns 3, 7, 11 exclude those at or above the 90th percentile; columns 4, 8, 12 exclude those at or above the 75th percentiles.

Table 7: CHANNELS

## (a) OUTCOMES ON OTHER DEATHS

	Log # Patents		Log # 3Y Citations		Log # Claims	
	(1)	(2)	(3)	(4)	(5)	(6)
# Rel. Deaths /Empl. +6 months	0.25 (0.17)		-0.92*** (0.15)		0.24 (0.17)	
# All Deaths/Empl. -6 months		0.22 (0.69)		-0.094 (0.45)		0.17 (0.71)
Small Business	1.06*** (0.36)	1.01*** (0.19)	0.68** (0.27)	1.03*** (0.20)	1.06*** (0.35)	1.02*** (0.19)
Propensity to patent	0.58** (0.24)	0.47 (0.36)	0.11 (0.17)	0.15 (0.22)	0.60** (0.25)	0.48 (0.36)
University	0.25 (0.33)	0.28 (0.35)	0.21 (0.20)	0.24 (0.19)	0.25 (0.34)	0.30 (0.35)
Bureau FEs	Yes	Yes	Yes	Yes	Yes	Yes
R&D Category FEs	Yes	Yes	Yes	Yes	Yes	Yes
R&D Stage FEs	Yes	Yes	Yes	Yes	Yes	Yes
Contract Features	Yes	Yes	Yes	Yes	Yes	Yes
Amount&Duration FEs	Yes	Yes	Yes	Yes	Yes	Yes
Calendar Year FEs	Yes	Yes	Yes	Yes	Yes	Yes
Adj. R-squared	0.08	0.12	0.02	0.10	0.08	0.12
Observations	1749.00	1750.00	1749.00	1750.00	1749.00	1750.00

\*  $p < .1$ , \*\*  $p < .05$ , \*\*\*  $p < .01$ 

## (b) OUTCOMES ON RELEVANT DEATHS - FIRM FIXED EFFECTS

	Log # Patents		Log # 3Y Citations		Log # Claims	
	(1)	(2)	(3)	(4)	(5)	(6)
Share Rel. Deaths	-0.43*** (0.14)	-0.78*** (0.25)	-0.23* (0.12)	-0.38*** (0.13)	-0.45*** (0.15)	-0.82*** (0.26)
Small Business	0.025 (0.52)	-0.0086 (0.55)	0.51 (0.44)	0.43 (0.26)	0.0078 (0.50)	-0.016 (0.57)
Propensity to patent	0.39 (0.28)	-0.63 (0.55)	0.29 (0.22)	-0.66 (0.59)	0.40 (0.29)	-0.62 (0.57)
Bureau FEs	Yes	Yes	Yes	Yes	Yes	Yes
R&D Category FEs	Yes	Yes	Yes	Yes	Yes	Yes
Contract Features	Yes	Yes	Yes	Yes	Yes	Yes
R&D Stage FEs	Yes	Yes	Yes	Yes	Yes	Yes
Amount&Duration FEs	Yes	Yes	Yes	Yes	Yes	Yes
Calendar Year FEs	Yes	Yes	Yes	Yes	Yes	Yes
Firm FEs	No	Yes	No	Yes	No	Yes
Adj. R-squared	0.05	0.16	0.01	0.15	0.05	0.15
Observations	1614.00	1614.00	1614.00	1614.00	1614.00	1614.00

\*  $p < .1$ , \*\*  $p < .05$ , \*\*\*  $p < .01$ 

Notes: \*\*\*  $p < 0.01$ , \*\*  $p < 0.05$ , \*  $p < 0.1$ . Standard errors are two-way clustered by bureau and R&D category and are in parentheses. Panel (a) shows placebo regressions using relevant deaths in the six months after award and non-relevant deaths. Panel (b) replicates Table 5 including firm fixed effects. In panel (b) *University* is excluded due to collinearity with seller fixed effects.

Table 8: WORKPLACE CHARACTERISTICS

	Log # Patents				Log # 3Y Citations				Log # Claims			
	(1)	(2)	(3)	(4)	(5)	(6)	(7)	(8)	(9)	(10)	(11)	(12)
Share Rel. Deaths	-1.02*** (0.15)	-1.03*** (0.20)	-0.98*** (0.17)	-0.64* (0.34)	-0.63*** (0.13)	-0.63** (0.22)	-0.65*** (0.18)	-0.52** (0.26)	-1.06*** (0.16)	-1.06*** (0.21)	-1.01*** (0.18)	-0.68* (0.35)
Cooperation	0.77*** (0.16)	0.73*** (0.19)	0.71*** (0.20)	0.65** (0.29)	0.66*** (0.17)	0.62*** (0.19)	0.60*** (0.18)	0.58** (0.24)	0.76*** (0.16)	0.71*** (0.19)	0.70*** (0.20)	0.64** (0.30)
Skill/Incentives	0.20 (0.28)	0.28 (0.29)	0.31 (0.28)	0.42 (0.41)	-0.070 (0.19)	0.021 (0.23)	0.041 (0.24)	0.15 (0.34)	0.23 (0.29)	0.32 (0.29)	0.35 (0.29)	0.46 (0.42)
Deaths/Empl. -6 months X Cooperation	-142.4** (65.8)	-148.9** (68.4)	-161.5** (63.9)	-114.0 (95.6)	-91.3*** (29.4)	-96.1** (34.2)	-99.5** (36.5)	-88.1 (67.8)	-144.9* (69.5)	-151.3*** (71.1)	-164.0** (67.2)	-118.8 (97.5)
Deaths/Empl. -6 months X Skill/Incentives	-14.4 (41.0)	-21.5 (47.6)	-5.29 (56.6)	28.0 (116.5)	-12.4 (43.8)	-16.4 (50.2)	-18.3 (49.2)	-7.45 (88.1)	-16.9 (43.4)	-24.3 (49.9)	-8.87 (59.0)	29.5 (117.7)
Bureau FEs	Yes	Yes	Yes	Yes	Yes	Yes	Yes	Yes	Yes	Yes	Yes	Yes
R&D Category FEs	Yes	Yes	Yes	Yes	Yes	Yes	Yes	Yes	Yes	Yes	Yes	Yes
R&D Stage FEs	No	No	Yes	Yes	No	No	Yes	Yes	No	No	Yes	Yes
Contract Features	No	No	No	Yes	No	No	No	Yes	No	No	No	Yes
Amount&Duration FEs	No	No	No	Yes	No	No	No	Yes	No	No	No	Yes
Adj. R-squared	0.03	0.03	0.03	0.07	0.01	0.01	0.02	0.03	0.03	0.03	0.03	0.07
Observations	1749.00	1749.00	1749.00	1749.00	1749.00	1749.00	1749.00	1749.00	1749.00	1749.00	1749.00	1749.00

\*  $p < .1$ , \*\*  $p < .05$ , \*\*\*  $p < .01$

Notes: \*\*\*  $p < 0.01$ , \*\*  $p < 0.05$ , \*  $p < 0.1$ . Standard errors are two-way clustered by bureau and R&D category and are in parentheses. This table reproduces table 5 by enriching all specifications with Cooperation and Skill/Incentives and the interaction of both variables with the share of relevant deaths.

## Web Appendix

**This Web Appendix Is Intended To Be Posted on the Author' Web Page**

### A Sample Selection

The starting point for the construction of our dataset is the totality of the R&D contracts between 2000 and 2013 available from FPDS. A small fraction of these contracts (around 3 percent) are at least associated to a patent that we are able to track through the 3PFL dataset. The remaining part is a heterogeneous group of contracts, divided between development contracts that have zero chances to produce patents and research contracts that have a positive probability to generate patents. A meaningful exercise requires to compare contracts that have generated patents with similar research contracts. We proceed as follows. First, we impose a criterion of temporal coherence such that the signature and the final date of each research contract cannot exceed the extreme signature and final date of the sample of contracts with patents. Second, we only keep contracts from bureaus that have a previous history of contracts producing patents to avoid selecting bureaus not involved in research activities. Third, we select contracts belonging to product service categories associated with patents. Finally, we retain contracts signed with suppliers that in the past were able to produce a patent. We check the reliability of our selection through a battery of robustness checks involving slight modifications to our analysis sample. In particular, as discussed in the main text, our analysis sample applies a series of filters to select a subset of contracts. In the tables from Table A.1 to Table A.7, we report the estimates of our baseline model on different samples obtained by iteratively eliminating the various filters used for sample selection. The most relevant finding is that the filter that matters the most is the one relative to the suppliers, Table A.5. Even in presence of the other filters, enlarging the pool of suppliers entails a null impact of a further death relative to the patent outcomes, but we still have a significant and positive (but smaller) effect on the citation outcome. Moreover, in Table A.8 we test whether the supplier selection is driven by any bureau characteristics, through two different specifications of a discrete choice model. We find that variables related to the organizational dimension and resources availability of the bureaus are the main drivers explaining the selection of firms capable to produce more patents.

Table A.1: NO FILTERS

	Log # Patents				Log # 3Y Citations				Log # Claims			
	(1)	(2)	(3)	(4)	(5)	(6)	(7)	(8)	(9)	(10)	(11)	(12)
Share Rel. Deaths	-0.069 (0.048)	-0.068 (0.049)	-0.058 (0.047)	-0.060 (0.048)	-0.041 (0.026)	-0.040 (0.025)	-0.033 (0.023)	-0.034 (0.024)	-0.072 (0.050)	-0.070 (0.051)	-0.061 (0.048)	-0.062 (0.050)
Cost Plus		0.026 (0.083)	-0.025 (0.076)	-0.037 (0.082)		0.080* (0.042)	0.043 (0.035)	0.040 (0.036)		0.026 (0.085)	-0.026 (0.078)	-0.038 (0.084)
Negotiation		-0.11 (0.067)	-0.11* (0.064)	-0.12* (0.062)		-0.061* (0.034)	-0.061* (0.032)	-0.064** (0.031)		-0.11 (0.068)	-0.11* (0.065)	-0.12* (0.063)
Competed		0.16** (0.074)	0.13* (0.075)	0.14* (0.071)		0.12* (0.060)	0.098 (0.059)	0.099* (0.056)		0.17** (0.075)	0.13* (0.076)	0.14* (0.072)
Small Business			0.031 (0.078)	0.048 (0.077)			0.026 (0.053)	0.036 (0.051)			0.030 (0.079)	0.048 (0.078)
Tech. Capacity			0.11*** (0.020)	0.11*** (0.020)			0.083*** (0.016)	0.084*** (0.015)			0.11*** (0.020)	0.12*** (0.020)
Bureau FEs	Yes	Yes	Yes	Yes	Yes	Yes	Yes	Yes	Yes	Yes	Yes	Yes
Year FEs	Yes	Yes	Yes	Yes	Yes	Yes	Yes	Yes	Yes	Yes	Yes	Yes
Amount&Duration FEs	Yes	Yes	Yes	Yes	Yes	Yes	Yes	Yes	Yes	Yes	Yes	Yes
R&D FEs	No	No	No	Yes	No	No	No	Yes	No	No	No	Yes
R-squared	0.03	0.03	0.04	0.04	0.02				0.03	0.03	0.04	0.04
Observations	14148.00	14148.00	14148.00	14148.00	14148.00	14148.00	14148.00	14148.00	14148.00	14148.00	14148.00	14148.00

\*  $p < .1$ , \*\*  $p < .05$ , \*\*\*  $p < .01$

Notes: The table replicates the baseline estimates without conditioning for bureaus, R&D categories and sellers associated with a record of patents in our data. Standard errors are two-way clustered by bureau and R&D category and are in parentheses. Amount FEs and Duration FEs represent deciles for contract value and duration.

Table A.2: FILTERS ON: BUREAUS

	Log # Patents				Log # 3Y Citations				Log # Claims			
	(1)	(2)	(3)	(4)	(5)	(6)	(7)	(8)	(9)	(10)	(11)	(12)
Share Rel. Deaths	-0.072 (0.051)	-0.069 (0.053)	-0.062 (0.051)	-0.060 (0.048)	-0.042 (0.028)	-0.040 (0.028)	-0.034 (0.026)	-0.035 (0.026)	-0.074 (0.052)	-0.072 (0.054)	-0.064 (0.053)	-0.063 (0.049)
Cost Plus		0.0093 (0.097)	-0.044 (0.087)	-0.059 (0.095)		0.074 (0.050)	0.035 (0.044)	0.029 (0.044)		0.0095 (0.10)	-0.044 (0.090)	-0.061 (0.098)
Negotiation		-0.13* (0.071)	-0.13* (0.068)	-0.15** (0.067)		-0.063* (0.035)	-0.063* (0.033)	-0.066* (0.034)		-0.13* (0.072)	-0.13* (0.070)	-0.15** (0.069)
Competed		0.20** (0.090)	0.17* (0.093)	0.18** (0.086)		0.15** (0.069)	0.13* (0.071)	0.12* (0.065)		0.21** (0.091)	0.18* (0.094)	0.18** (0.088)
Small Business			0.034 (0.092)	0.053 (0.089)			0.028 (0.063)	0.039 (0.060)			0.033 (0.093)	0.053 (0.090)
Tech. Capacity			0.11*** (0.025)	0.11*** (0.026)			0.080*** (0.016)	0.081*** (0.016)			0.11*** (0.025)	0.11*** (0.026)
Bureau FEs	Yes	Yes	Yes	Yes	Yes	Yes	Yes	Yes	Yes	Yes	Yes	Yes
Year FEs	Yes	Yes	Yes	Yes	Yes	Yes	Yes	Yes	Yes	Yes	Yes	Yes
Amount&Duration FEs	Yes	Yes	Yes	Yes	Yes	Yes	Yes	Yes	Yes	Yes	Yes	Yes
R&D FEs	No	No	No	Yes	No	No	No	Yes	No	No	No	Yes
R-squared	0.03	0.03	0.04	0.04	0.02				0.03	0.03	0.03	0.04
Observations	11988.00	11988.00	11988.00	11988.00	11988.00	11988.00	11988.00	11988.00	11988.00	11988.00	11988.00	11988.00

\*  $p < .1$ , \*\*  $p < .05$ , \*\*\*  $p < .01$

Notes: The table replicates the baseline estimates only conditioning for bureaus associated with record of patents in our data. Standard errors are two-way clustered by bureau and R&D category and are in parentheses. Amount FEs and Duration FEs represent deciles for contract value and duration.



Table A.3: FILTERS ON: SERVICES

	Log # Patents				Log # 3Y Citations				Log # Claims			
	(1)	(2)	(3)	(4)	(5)	(6)	(7)	(8)	(9)	(10)	(11)	(12)
Share Rel. Deaths	-0.069 (0.049)	-0.068 (0.050)	-0.058 (0.048)	-0.059 (0.048)	-0.042 (0.027)	-0.040 (0.027)	-0.033 (0.025)	-0.034 (0.025)	-0.071 (0.050)	-0.070 (0.052)	-0.061 (0.050)	-0.062 (0.050)
Cost Plus		0.021 (0.094)	-0.038 (0.085)	-0.053 (0.091)		0.076 (0.049)	0.033 (0.042)	0.029 (0.043)		0.022 (0.097)	-0.038 (0.087)	-0.054 (0.094)
Negotiation		-0.11 (0.070)	-0.11 (0.067)	-0.13* (0.064)		-0.058 (0.035)	-0.060* (0.033)	-0.065* (0.033)		-0.11 (0.071)	-0.11 (0.068)	-0.13* (0.066)
Competed		0.18** (0.077)	0.15* (0.077)	0.16** (0.073)		0.13** (0.062)	0.11* (0.061)	0.11* (0.057)		0.19** (0.078)	0.16* (0.078)	0.16** (0.074)
Small Business			0.025 (0.082)	0.041 (0.080)			0.022 (0.055)	0.032 (0.053)			0.024 (0.083)	0.040 (0.081)
Tech. Capacity			0.11*** (0.019)	0.11*** (0.021)			0.083*** (0.015)	0.084*** (0.015)			0.11*** (0.020)	0.11*** (0.021)
Bureau FEs	Yes	Yes	Yes	Yes	Yes	Yes	Yes	Yes	Yes	Yes	Yes	Yes
Year FEs	Yes	Yes	Yes	Yes	Yes	Yes	Yes	Yes	Yes	Yes	Yes	Yes
Amount&Duration FEs	Yes	Yes	Yes	Yes	Yes	Yes	Yes	Yes	Yes	Yes	Yes	Yes
R&D FEs	No	No	No	Yes	No	No	No	Yes	No	No	No	Yes
R-squared	0.03	0.03	0.04	0.04	0.02				0.03	0.03	0.04	0.04
Observations	13104.00	13104.00	13104.00	13104.00	13104.00	13104.00	13104.00	13104.00	13104.00	13104.00	13104.00	13104.00

\*  $p < .1$ , \*\*  $p < .05$ , \*\*\*  $p < .01$

Notes: The table replicates the baseline estimates only conditioning for R&D categories associated with a record of patents in our data. Standard errors are two-way clustered by bureau and R&D category and are in parentheses. Amount FEs and Duration FEs represent deciles for contract value and duration.

Table A.4: FILTERS ON: SELLERS

	Log # Patents				Log # 3Y Citations				Log # Claims			
	(1)	(2)	(3)	(4)	(5)	(6)	(7)	(8)	(9)	(10)	(11)	(12)
Share Rel. Deaths	-0.56 (.)	-0.51*** (0.16)	-0.50** (0.20)	-0.46** (0.18)	-0.32 (.)	-0.27*** (0.069)	-0.27*** (0.092)	-0.24*** (0.086)	-0.58 (.)	-0.53*** (0.17)	-0.52** (0.21)	-0.49** (0.19)
Cost Plus		-0.80** (0.38)	-0.63* (0.34)	-0.74** (0.36)		-0.27 (0.19)	-0.17 (0.18)	-0.21 (0.18)		-0.82** (0.39)	-0.65* (0.35)	-0.76** (0.37)
Negotiation		-0.35 (0.21)	-0.37* (0.21)	-0.41** (0.20)		-0.16* (0.087)	-0.17* (0.086)	-0.20*** (0.068)		-0.35 (0.21)	-0.37* (0.21)	-0.41* (0.20)
Competed		0.68** (0.33)	0.51 (0.33)	0.55 (0.33)		0.50** (0.24)	0.38 (0.24)	0.40* (0.21)		0.70** (0.33)	0.52 (0.33)	0.56 (0.33)
Small Business			0.93** (0.37)	1.00*** (0.33)			0.58** (0.24)	0.64*** (0.20)			0.95** (0.38)	1.02*** (0.34)
Tech. Capacity			0.020 (0.027)	0.024 (0.023)			0.021 (0.025)	0.026 (0.028)			0.020 (0.030)	0.023 (0.024)
Bureau FEs	Yes	Yes	Yes	Yes	Yes	Yes	Yes	Yes	Yes	Yes	Yes	Yes
Year FEs	Yes	Yes	Yes	Yes	Yes	Yes	Yes	Yes	Yes	Yes	Yes	Yes
Amount&Duration FEs	Yes	Yes	Yes	Yes	Yes	Yes	Yes	Yes	Yes	Yes	Yes	Yes
R&D FEs	No	No	No	Yes	No	No	No	Yes	No	No	No	Yes
R-squared	0.05	0.06	0.06	0.07	0.04				0.05	0.06	0.06	0.07
Observations	3926.00	3926.00	3926.00	3926.00	3926.00	3926.00	3926.00	3926.00	3926.00	3926.00	3926.00	3926.00

\*  $p < .1$ , \*\*  $p < .05$ , \*\*\*  $p < .01$

Notes: The table replicates the baseline estimates only conditioning for sellers associated with a record of patents in our data. Standard errors are two-way clustered by bureau and R&D category and are in parentheses. Amount FEs and Duration FEs represent deciles for contract value and duration.

Table A.5: FILTERS ON: BUREAUS AND R&D CATEGORIES

	Log # Patents				Log # 3Y Citations				Log # Claims			
	(1)	(2)	(3)	(4)	(5)	(6)	(7)	(8)	(9)	(10)	(11)	(12)
Share Rel. Deaths	-0.070 (0.047)	-0.067 (0.051)	-0.058 (0.047)	-0.060 (0.047)	-0.042 (0.027)	-0.039 (0.027)	-0.032 (0.024)	-0.035 (0.025)	-0.073 (0.049)	-0.069 (0.052)	-0.060 (0.049)	-0.062 (0.048)
Cost Plus		0.00080 (0.11)	-0.058 (0.095)	-0.078 (0.10)		0.073 (0.058)	0.030 (0.049)	0.024 (0.050)		0.00074 (0.11)	-0.060 (0.098)	-0.080 (0.11)
Negotiation		-0.12 (0.078)	-0.13 (0.076)	-0.15* (0.074)		-0.056 (0.038)	-0.058 (0.036)	-0.064* (0.036)		-0.13 (0.079)	-0.13 (0.077)	-0.15* (0.076)
Competed		0.22** (0.094)	0.19* (0.096)	0.20** (0.091)		0.16** (0.074)	0.13* (0.075)	0.14* (0.070)		0.23** (0.095)	0.19* (0.097)	0.20** (0.093)
Small Business			0.035 (0.099)	0.054 (0.094)			0.031 (0.068)	0.043 (0.063)			0.035 (0.10)	0.053 (0.095)
Tech. Capacity			0.11*** (0.025)	0.11*** (0.026)		0.081*** (0.017)	0.082*** (0.017)			0.11*** (0.025)	0.11*** (0.026)	
Bureau FEs	Yes	Yes	Yes	Yes	Yes	Yes	Yes	Yes	Yes	Yes	Yes	Yes
Year FEs	Yes	Yes	Yes	Yes	Yes	Yes	Yes	Yes	Yes	Yes	Yes	Yes
Amount&Duration FEs	Yes	Yes	Yes	Yes	Yes	Yes	Yes	Yes	Yes	Yes	Yes	Yes
R&D FEs	No	No	No	Yes	No	No	No	Yes	No	No	No	Yes
R-squared	0.03	0.03	0.04	0.04	0.02				0.03	0.03	0.04	0.04
Observations	11142.00	11142.00	11142.00	11142.00	11142.00	11142.00	11142.00	11142.00	11142.00	11142.00	11142.00	11142.00

\*  $p < .1$ , \*\*  $p < .05$ , \*\*\*  $p < .01$

Notes: The table replicates the baseline estimates only conditioning for bureaus and R&D categories associated with a record of patents in our data. Standard errors are two-way clustered by bureau and R&D category and are in parentheses. Amount FEs and Duration FEs represent deciles for contract value and duration.

Table A.6: FILTERS ON: BUREAUS AND SELLERS

	Log # Patents				Log # 3Y Citations				Log # Claims			
	(1)	(2)	(3)	(4)	(5)	(6)	(7)	(8)	(9)	(10)	(11)	(12)
Share Rel. Deaths	-0.56 (.)	-0.49*** (0.18)	-0.48** (0.22)	-0.47** (0.21)	-0.32 (.)	-0.27*** (0.066)	-0.27*** (0.088)	-0.26*** (0.084)	-0.58 (.)	-0.51*** (0.19)	-0.50** (0.23)	-0.50** (0.22)
Cost Plus		-0.84** (0.38)	-0.66* (0.34)	-0.77** (0.36)		-0.28 (0.20)	-0.17 (0.18)	-0.22 (0.18)		-0.86** (0.40)	-0.68* (0.35)	-0.79** (0.37)
Negotiation		-0.37 (0.22)	-0.38* (0.22)	-0.43** (0.21)		-0.14 (0.086)	-0.15* (0.088)	-0.17** (0.075)		-0.37 (0.23)	-0.38 (0.23)	-0.43* (0.21)
Competed		0.70* (0.35)	0.50 (0.36)	0.54 (0.36)		0.49* (0.25)	0.37 (0.26)	0.36 (0.23)		0.71* (0.36)	0.52 (0.37)	0.55 (0.37)
Small Business			0.97** (0.38)	1.05*** (0.33)		0.60** (0.25)	0.68*** (0.20)			0.99** (0.39)	1.07*** (0.34)	
Tech. Capacity			0.016 (0.029)	0.021 (0.023)		0.020 (0.024)	0.026 (0.028)			0.016 (0.031)	0.020 (0.023)	
Bureau FEs	Yes	Yes	Yes	Yes	Yes	Yes	Yes	Yes	Yes	Yes	Yes	Yes
Year FEs	Yes	Yes	Yes	Yes	Yes	Yes	Yes	Yes	Yes	Yes	Yes	Yes
Amount&Duration FEs	Yes	Yes	Yes	Yes	Yes	Yes	Yes	Yes	Yes	Yes	Yes	Yes
R&D FEs	No	No	No	Yes	No	No	No	Yes	No	No	No	Yes
R-squared	0.05	0.05	0.06	0.07	0.03				0.05	0.05	0.06	0.07
Observations	3783.00	3783.00	3783.00	3783.00	3783.00	3783.00	3783.00	3783.00	3783.00	3783.00	3783.00	3783.00

\*  $p < .1$ , \*\*  $p < .05$ , \*\*\*  $p < .01$

Notes: The table replicates the baseline estimates conditioning for bureaus and sellers associated with a record of patents in our data. Standard errors are two-way clustered by bureau and R&D category and are in parentheses. Amount FEs and Duration FEs represent deciles for contract value and duration.



Table A.8: SELLER SELECTION

	Probit: Selection of sellers				LPM: Selection of sellers			
	(1)	(2)	(3)	(4)	(5)	(6)	(7)	(8)
Log Budget	0.00*** (0.00)	0.00*** (0.00)	0.00*** (0.00)	0.00*** (0.00)	0.00*** (0.00)	0.00*** (0.00)	0.00*** (0.00)	0.00*** (0.00)
Median Age		0.10 (0.12)	0.07 (0.11)	0.05 (0.12)		0.03 (0.03)	0.02 (0.03)	0.02 (0.03)
Median Education		-0.02 (0.04)	0.01 (0.05)	0.02 (0.05)		-0.01 (0.01)	0.00 (0.02)	0.01 (0.02)
Median LOS		-0.04 (0.03)	-0.03 (0.04)	-0.02 (0.04)		-0.01 (0.01)	-0.01 (0.01)	-0.01 (0.01)
Median Salary		0.06 (0.06)	0.07 (0.06)	0.06 (0.07)		0.02 (0.02)	0.03 (0.02)	0.02 (0.02)
Median WF Composition		0.98*** (0.23)	0.97*** (0.25)	1.13*** (0.35)		0.30*** (0.07)	0.30*** (0.08)	0.36*** (0.11)
Iqr Age		-0.09*** (0.03)	-0.11*** (0.04)	-0.10** (0.04)		-0.02* (0.01)	-0.03** (0.01)	-0.03* (0.02)
Iqr Education		0.01 (0.02)	-0.00 (0.02)	0.00 (0.03)		0.00 (0.01)	0.00 (0.01)	-0.00 (0.01)
Iqr LOS		0.04 (0.02)	0.03 (0.03)	0.03 (0.03)		0.01 (0.01)	0.01 (0.01)	0.01 (0.01)
Iqr Salary		0.02 (0.03)	0.02 (0.04)	0.02 (0.04)		0.01 (0.01)	0.01 (0.01)	0.01 (0.01)
Iqr WF Composition		0.73*** (0.19)	0.72*** (0.19)	0.76*** (0.19)		0.14*** (0.03)	0.15*** (0.04)	0.16*** (0.04)
Accomplishment			-0.20 (0.68)	-0.73 (0.76)			-0.05 (0.24)	-0.16 (0.25)
Appreciation			-0.22 (0.91)	-0.02 (0.81)			-0.12 (0.32)	-0.04 (0.27)
Level of Workload			-0.60 (0.43)	-0.49 (0.45)			-0.23 (0.14)	-0.20 (0.14)
Physical condition workplace			0.32* (0.19)	0.59* (0.31)			0.13** (0.05)	0.22** (0.09)
Integration policy				-0.11 (0.63)				-0.09 (0.18)
Health Security				-0.83 (0.53)				-0.25 (0.17)
Good Place to work				0.47 (0.57)				0.17 (0.18)
Balance work/life				0.21 (0.51)				0.01 (0.15)
Job Satisfaction				-0.14 (0.55)				-0.08 (0.18)
Pay Satisfaction				-0.18 (0.47)				-0.07 (0.14)
Year FEs	Yes	Yes	Yes	Yes	Yes	Yes	Yes	Yes
Bureau FEs	Yes	Yes	Yes	Yes	Yes	Yes	Yes	Yes
Observations	16813.00	16813.00	16813.00	16813.00	16822.00	16822.00	16822.00	16822.00

\*  $p < .1$ , \*\*  $p < .05$ , \*\*\*  $p < .01$ 

Notes: The table reports the estimates of a dummy variable equal to 1 if a seller is included in the baseline sample regressed on bureau characteristics. Columns (1)-(4) report the estimates using a probit model and an increasing set of controls. Columns (5)-(8) report the estimates using a linear probability model. Standard errors are clustered by bureau and are in parentheses.

Table A.9: Bureau State Death Variation

Bureau State	2006	2007	2008	2009	2010	2011	2012
AF0J FL: FLORIDA				X	X		
AF0J TX: TEXAS			X				
AF1M AZ: ARIZONA				X	X	X	
AF1M CA: CALIFORNIA	X	X	X	X	X	X	X
AF1M CO: COLORADO			X				
AF1M FL: FLORIDA		X	X			X	X
AF1M GA: GEORGIA	X	X	X	X	X	X	X
AF1M IL: ILLINOIS							
AF1M MA: MASSACHUSE..		X				X	
AF1M MD: MARYLAND							
AF1M MO: MISSOURI							
AF1M NH: NEW HAMPSH..							
AF1M NM: NEW MEXICO		X					
AF1M NY: NEW YORK							
AF1M OH: OHIO	X	X	X	X		X	X
AF1M TX: TEXAS		X		X			
AF1M UT: UTAH	X			X		X	X
AF1M VA: VIRGINIA			X				
AF1S CA: CALIFORNIA							
AF1S CO: COLORADO							
AF1S FL: FLORIDA							
ARAS VA: VIRGINIA		X					
ARCE AL: ALABAMA					X		
ARCE AR: ARKANSAS							
ARCE AZ: ARIZONA							X
ARCE CA: CALIFORNIA							
ARCE CO: COLORADO							
ARCE CT: CONNECTICUT							
ARCE FL: FLORIDA				X		X	
ARCE IA: IOWA							
ARCE IN: INDIANA							
ARCE MA: MASSACHUSE..							
ARCE MD: MARYLAND							
ARCE MN: MINNESOTA							
ARCE MO: MISSOURI						X	
ARCE MS: MISSISSIPPI			X			X	
ARCE NC: NORTH CARO..						X	
ARCE NM: NEW MEXICO				X			
ARCE NY: NEW YORK			X				
ARCE OH: OHIO							
ARCE PA: PENNSYLVANIA							
ARCE SC: SOUTH CARO..							
ARCE TX: TEXAS							
ARCE VA: VIRGINIA						X	
ARCE WA: WASHINGTON							
ARMC TN: TENNESSEE							

Table A.9: Bureau State Death Variation

Bureau State	2006	2007	2008	2009	2010	2011	2012
CM54 MD: MARYLAND				X			
CM54 TX: TEXAS					X		
DD63 CA: CALIFORNIA		X					
HE38 MD: MARYLAND			X	X	X		
HE38 NC: NORTH CARO..		X					
NN22 OH: OHIO				X	X		
NN23 VA: VIRGINIA		X	X	X	X	X	
NN62 AL: ALABAMA							
NV14 AL: ALABAMA							
NV14 AZ: ARIZONA							
NV14 CA: CALIFORNIA							
NV14 DC: DISTRICT O..		X					
NV14 FL: FLORIDA							
NV14 GA: GEORGIA							
NV14 MA: MASSACHUSE..							
NV14 MD: MARYLAND							
NV14 NC: NORTH CARO..							
NV14 NM: NEW MEXICO							
NV14 NY: NEW YORK							
NV14 PA: PENNSYLVANIA							
NV14 SC: SOUTH CARO..							
NV14 VA: VIRGINIA			X				
NV14 WA: WASHINGTON							
NV19 CA: CALIFORNIA	X	X		X	X	X	X
NV19 FL: FLORIDA		X			X		
NV19 IL: ILLINOIS							
NV19 IN: INDIANA							
NV19 MD: MARYLAND	X	X	X	X	X		
NV19 NJ: NEW JERSEY							
NV19 NY: NEW YORK							
NV19 VA: VIRGINIA							
NV23 CA: CALIFORNIA						X	
NV24 AZ: ARIZONA							
NV24 CA: CALIFORNIA		X	X	X			
NV24 FL: FLORIDA					X		
NV24 MA: MASSACHUSE..							
NV24 MI: MICHIGAN							
NV24 NH: NEW HAMPSH..							
NV24 PA: PENNSYLVANIA			X		X		
NV24 RI: RHODE ISLAND			X		X	X	
NV24 VA: VIRGINIA	X	X	X	X	X		
NV39 AZ: ARIZONA							
NV39 CA: CALIFORNIA			X	X	X	X	
NV39 CO: COLORADO							
NV39 FL: FLORIDA			X				
NV39 GA: GEORGIA							
NV39 MA: MASSACHUSE..							
NV39 MD: MARYLAND							
NV39 PA: PENNSYLVANIA							
NV39 VA: VIRGINIA							
TD03 VA: VIRGINIA			X				

Notes: Intersection between bureau-state (rows) and year (columns) are filled with X when at least one relevant death event occurred.

## B Workplace Features

As explanatory variables that we use to investigate the channels through which deaths of managers affect the quality of procurement of innovation processes, we consider bureau-level characteristics coming from the FEVS. Since the early 2000s, the Office of Personnel Management has called on federal employees to provide their opinions on all aspects of their employment, including evaluations of their supervisors, bureaus, agencies and, more generally, of their work experience.

Table B.1: Quantiles of Age and Salary

	Managers		Other White-Collar Employees	
	Age	Salary	Age	Salary
1 %	25-29	\$30,000 - \$39,999	20-24	\$20,000 - \$29,999
5 %	30-34	\$40,000 - \$49,999	25-29	\$20,000 - \$29,999
10 %	35-39	\$50,000 - \$59,999	25-29	\$30,000 - \$39,999
25 %	40-44	\$60,000 - \$69,999	35-39	\$40,000 - \$49,999
50 %	50-54	\$90,000 - \$99,999	45-49	\$50,000 - \$59,999
75 %	55-59	\$120,000 - \$129,999	50-54	\$80,000 - \$89,999
90 %	60-64	\$140,000 - \$149,999	60-64	\$100,000 - \$109,999
95 %	60-64	\$150,000 - \$159,999	60-64	\$120,000 - \$129,999
99 %	65 or more	\$180,000 or more	65 or more	\$160,000 - \$169,999
Obs	2,131,206	2,131,206	11,914,322	11,914,322
Std. Dev.	1.74	3.54	2.34	3.10
Av. # employees	583	583	3,208	3,208
Md. # employees	76	76	322	322
Employees Std. Dev.	1,718	1,718	12,570	12,570
Local Av. # employees	45	45	184	184
Local Md. # employees	6	6	12	12
Local Employees Std. Dev.	151	151	782	782

*Notes:* The table reports the distribution of age and salary separately for two groups of employees, managers and other white-collar employees during the time window 2006-2012. The sample is taken from the Employment cube of FedScope. Blue-collar workers are expunged. 1 point S.D. in *Age* represents 5 years; 1 point S.D. in salary represents \$10,000.

FEVS was run biannually starting with 2002; only since 2010 has it been run on a yearly basis. We focus on the period 2006-2012 and we fill the gaps for years 2007 and 2009 by imputing the mean, respectively 2006 to 2008 and 2008 to 2010.<sup>43</sup> There is a total of 107 bureaus from 20 agencies that are invited to participate accounting for 97 percent of the executive branch workforce with about half of the employees randomly selected to participate in the survey and an average 47 percent response rate. The FEVS consists of 85 questions divided into five different sections which appear to respondents in the following order: my work experience, my work unit, my agency, my satisfaction and work/life. The section “my work unit”, presented in Table B.2, begins with eight

<sup>43</sup>We focus on all bureaus that in a year procure at least one contract. To allow for matching with other datasets, we i) aggregate the answers to the questionnaire at the bureau level and ii) do not consider the 2002 and 2004 surveys because of the few federal bureaus involved.

questions pertaining to different features of the bureau and ends with a ninth question aiming to capture the overall effectiveness of the job done in the office. From the content of the questions, we derive three bureau features, namely *cooperation*, *incentives* and *skills*. The two-factor principal component analysis, whose weights are reported in the last two columns of Table B.2, shows how our “textual classification” is correct and how answers related to skill and incentive characteristics of the office tend to correlate.

Table B.2: List of FEVS Questions Composing the “My Work Unit” Section

Q#	Question	Classification	PCA Skill/Incentive Factor 1 Weights	PCA Cooperation Factor 2 Weights
<b>My Work Unit:</b>				
20	The people I work with cooperate to get the job done.	Cooperation	<0.01	0.60
21	My work unit is able to recruit people with the right skills.	Skills	0.08	0.04
22	Promotions in my work unit are based on merit.	Incentives	0.16	<0.01
23	In my work unit, steps are taken to deal with a poor performer who cannot or will not improve.	Incentives	0.19	<0.01
24	In my work unit, differences in performance are recognized in a meaningful way.	Incentives	0.22	<0.01
25	Awards in my work unit depend on how well employees perform their jobs.	Incentives	0.17	<0.01
26	Employees in my work unit share job knowledge with each other.	Cooperation	<0.01	0.35
27	The skill level in my work unit has improved in the past year.	Skills	0.14	<0.01
28	How would you rate the overall quality of work done by your work unit?	Competence	-	-

*Notes:* The complete set of nine questions in the FEVS section dedicated to the employees’ assessment of their work unit. The numbering in column one reflects that in the FEVS. The last two columns report the percentage contributions that each variable assumes through the weights calculated by the factor analysis.

For all questions, employees’ responses are in five ordered levels of intensity. For a typical question, the possible responses are: very poor, poor, fair, good, very good.<sup>44</sup> We first transform these answers into numerical values from zero to four, then we aggregate answers at the bureau level (by using the FEVS’ representative weights), and finally we normalize the resulting variables to be between zero and one.

To further explore drivers of the impact of managers’ deaths on innovation procurement processes, in Table B.3 we regress *Skill/Incentive* and *Cooperation* on our main explanatory variable (i.e., *Relevant Deaths*). Odd columns only include bureau and R&D category fixed effects while in even columns we add the full battery of baseline fixed effects and controls. The signs of the coefficient are negative, suggesting that managers’ deaths disrupt office features. However, the magnitudes of death impact in this model are hard to interpret. First, bureau features are evaluated at bureau-year level while we measure the number of death events by fixing the month of contract award. In other words, the observation in these regressions is the contract while the outcome is the bureau-year pair. This is highlighted by the high R-squared reported. In order to

<sup>44</sup>The respondent can also report “do not know” or leave the question unanswered, but both occurrences are rare (typically less than 2 percent of the responses for each of these two cases).



Table B.3: BUREAU FEATURES - CONTRACT LEVEL

	PCA Skill/Incentive		PCA Cooperation	
	(1)	(2)	(3)	(4)
Share Rel. Deaths	-0.033 (0.044)	-0.051*** (0.015)	-0.13 (.)	-0.10*** (0.0096)
Small Business		-0.034 (0.043)		0.027** (0.010)
Propensity to patent		0.015** (0.0068)		0.00093 (0.010)
University		-0.019*** (0.0052)		-0.0061 (0.011)
Bureau FEs	Yes	Yes	Yes	Yes
R&D Category FEs	Yes	Yes	Yes	Yes
R&D Stage FEs	No	Yes	No	Yes
Amount&Duration FEs	No	Yes	No	Yes
Calendar Year FEs	No	Yes	No	Yes
R-squared	0.85	0.96	0.64	0.94
Observations	1749.00	1749.00	1749.00	1749.00

\*  $p < .1$ , \*\*  $p < .05$ , \*\*\*  $p < .01$

*Notes:* The observation is the contract. Standard errors are two-way clustered by bureau and R&D category and are in parentheses. Amount FEs and Duration FEs represent deciles for contract value and duration.

provide a more reliable estimate, in Table B.4 we regress the same outcomes on the number of relevant deaths in the bureau-year-State triple in our working sample—still as a fraction of total white-collar workers. While odd columns report a plain regression of bureau features on deaths, even columns augment the model with bureau and year fixed effects, leaving the cross-sectional variation occurring at local level. In a more neat fashion, this latter model displays how events of managers’ deaths do worsen the office features as perceived by employees and provide evidence of a concurrent effect going on in the office besides the worsening of outcomes of R&D procurements.

Table B.4: BUREAU FEATURES - BUREU/YEAR LEVEL

	PCA Skill/Incentive		PCA Cooperation	
	(1)	(2)	(3)	(4)
Share Rel. Deaths	0.39*** (0.11)	-0.028 (0.022)	0.30*** (0.068)	-0.025* (0.014)
Bureau FEs	No	Yes	No	Yes
Calendar Year FEs	No	Yes	No	Yes
Adj. R-squared	0.04	0.88	0.04	0.90
Observations	161.00	161.00	161.00	161.00

\*  $p < .1$ , \*\*  $p < .05$ , \*\*\*  $p < .01$

*Notes:* Observation is the bureau-year-State triple. SE are two-way clustered by bureau and R&D category.

## C Additional Robustness Checks

This appendix reports additional robustness checks. For convenience, these results are subdivided in six groups depending on whether the robustness analysis involves: 1) measurement of the dependent variable; 2) measurement of the main independent variable; 3) the set of regression controls; 4) the estimation approach; 5) methods to conduct inference; and 6) sample selection criteria.

### 1. Robustness to the definition of the dependent variable:

- The baseline estimates presented are based on a linear model. However, following Bellégo and Pape (2019), we use as dependent variable the logarithm of a small constant  $x$  (set equal to  $10^{-9}$ ) plus the innovation counts. We explicitly address the effects of using different values of  $x$  by plotting in Figure C.1 the estimates associated with a range of value for  $x$  going down from 1 and approaching zero. As discussed in Bellégo and Pape (2019), we observe that the log transformation biases the estimates. Even though, throughout the whole range of values of  $x$  the estimated effects of relevant deaths on patents is negative and significant, as  $x$  gets smaller this effects becomes larger but less precisely estimated. Our choice to set  $x$  equal to  $10^{-9}$  corresponds to using the largest value of  $x$  such that the point estimate from the linear model would be closest to the corresponding Poisson estimate. Regarding the non-linear model, we implemented the Santos Silva and Tenreiro (2006) high-dimensional fixed effects Poisson regression model.<sup>45</sup> The results are reported in Table C.1. The findings are qualitatively similar to those in the baseline estimates. Although the magnitude of the Poisson point estimate is always larger than the corresponding IPWRA point estimate, all of the Poisson point estimates are contained within the 95 percent confidence interval of the corresponding IPWRA estimates.
- Table C.2: we report our baseline IPWRA estimates but using as dependent variable a dummy for whether the contract generated at least one patent. These estimates confirm the negative association between relevant deaths and the probability of the contract generating any patent.

### 2. Robustness to the choice of independent variable:

---

<sup>45</sup>Indeed, the use of fixed effects is possible in the Poisson model under fairly general conditions, while this is not the case for the Negative Binomial model.

- Timing of the deaths. This set of robustness checks indicates that the negative effects of our treatment on the innovation outcomes are due to the short-term disruption that a bureau awarding R&D contracts suffers. Specifically, we proceeded as follows. In Table C.3, we created temporal dummies equal to 1 if a death event occurred in the bureau-location at least two months, between three and four months, or between five and six months before the signature of the contract. In table C.3 we replicate the baseline by including these dummies as treatments. We find a significant, negative effect of the at-least-2-months dummy with an average 2 percent effect on our outcomes.
- Table C.4 reports the results of a sensitivity analysis of the definition of what relevant employees are. In particular, in this table we report estimates equivalent to those of the most saturated model of the baseline estimates in the text, but using alternative thresholds for age and salary to identify relevant employees. In our baseline definition of these thresholds, relevant employees are those with a salary no lower than the median salary (i.e., the \$40K-50K salary group) and an age no higher than the median age (i.e., the age group 40-44 years old). In each of the 4 panels in Table C.4, we experiment by moving up or down by 1 quartile one threshold at a time. Hence, in the top panel we increase the salary threshold from the median salary to the top quartile salary, i.e., from the \$40K-50K salary group to the \$80K-90K salary group. In the next panel, we lower the age threshold from the median age to the bottom quartile age, i.e., from the age group 40-44 years old to the age group 30-34 years old. The last two panels lower the threshold for salary (third panel) and increase that for age (fourth panel). The main finding is that our baseline estimates are robust to the most reasonable alternative definition of relevant workers which entails selecting on top quartile wages (top panel). The estimates remain negative but lose statistical significance with the three other alternative definitions. The observation that the estimated coefficients become negligible in magnitude in the bottom two panels is indicative of the fact that including older or lower-wage workers as relevant employees would be inadequate.

### 3. Robustness to the choice of control variables:

- In Table C.5, we include bureau-X-years fixed effects that capture bureau-specific trends in our specification. The results are in table C.5. We find that this unobserved heterogeneity does not affect our baseline results, which remain very similar.

- Table C.6: where we run our baseline analysis after excluding the possibly endogenous controls for pricing and competition from our model.
  - Table C.7 is in the spirit of Table 6 in the paper: in the place of gradually excluding larger and larger offices, we include office size dummies as controls and we also interact them with Relevant Deaths.
4. Robustness to the estimation approach. Across these three sets of estimates, the magnitudes are typically higher than in the corresponding baseline estimates suggesting that our preferred methodology is unlikely driving us to overstate the impacts of relevant deaths on innovation outcomes. More details on the three sets of estimates are reported below:
- No weighting. In Table C.8, we present plain OLS estimates corresponding to our baseline IPWRA estimates.
  - No weighting and IPW-controls. In Table C.9, we present OLS estimates corresponding to the baseline IPWRA model specifications augmented with an expanded set of controls. In particular, in addition to the controls used in the baseline specifications, we include as regression controls all of the variables that we use as predictors for the propensity score in the IPWRA estimates.
  - Zero/one weighting of the control sample. In Table C.10, we present OLS estimates on a subsample of that, relative to the baseline analysis sample in the main text, retains all the observations associated with an office/year experiencing at least one death event (i.e., treated group) and the most similar observations associated with an office/year experiencing no deaths (i.e., control group). To identify which are the “most similar observations” we employ the same prediction model employed for the IPWRA in the baseline regression and select for each treated observation the closest control group observation in terms of the predicted probability of observing a relevant death.<sup>46</sup>
5. Robustness to different approaches to inference:
- Table C.11 reports the baseline regressions, but without the two-way clustering, using instead heteroscedastic robust standard errors.
  - Table C.12 reports the baseline regressions estimated using firm fixed effects in all specifications and reporting heteroscedastic robust standard errors.

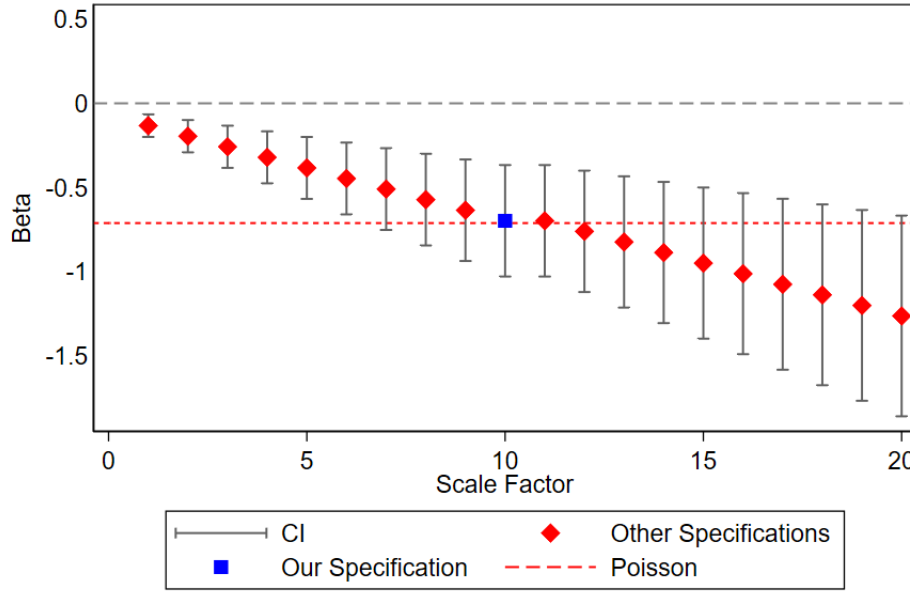
---

<sup>46</sup>Ties among control units all being the closest to a treatment unit are resolved by retaining in the sample all of these control group observations.

## 6. Robustness to the sample selection criteria

- Table C.13: we propose our primary empirical analysis after having included the number of relevant white-collar employees in place of the number of white collars and recalculating the propensity score.
- Table C.14 and Table C.15 report the equivalent of our baseline regressions but using a different threshold for the lowest contract value admitted in the sample. In the baseline estimates, this threshold is \$14,000 which corresponds to the lowest contract value of a contract generating a patent. In Table C.14 this threshold is set to \$25,000, while in Table C.15 it is set to \$144,559 which implies eliminating from the sample the lowest quartile of contracts.
- Table C.16 excludes selectively different categories of contracting officers. Two factors strongly support the office-wide organizational disruption hypothesis. First, Rendon et al. (2012) make a strong point in discerning management practices between the Navy and the Air force and the Army. The latest agencies benefit from the spillovers of a procurement at the installation level due to better monitoring and coordination inside working teams. Moreover, management more focused on projects plays an essential role in obtaining substantial gains in efficiency. The office-wide disruption is more disruptive where the procurement is more localized without affecting directly specific contractual categories. Suggestive of this interpretation is a set of robust checks on the sensitivity of our results to the exclusion of peculiar working categories. We repeated the analysis, each time, by excluding any of the top ten most represented categories amongst the death events in our panel of Bureau-state's. In Table C.16 we replicate the models in columns 4, 8, and 12 of the baseline regression table. Overall, we find that no category is able to flip our results entirely, and on average, the results of the baselines are confirmed.

Figure C.1: Bias in Outcomes



Notes: We plot the coefficient of several regression with the specification of column 3 and smaller constant added to the outcome variable ]

Table C.1: HIGH-DIMENSIONAL FIXED EFFECTS POISSON REGRESSION

	# Patents				# 3Y Citations				# Claims			
	(1)	(2)	(3)	(4)	(5)	(6)	(7)	(8)	(9)	(10)	(11)	(12)
Share Rel. Deaths	-0.85** (0.33)	-0.77*** (0.24)	-0.69*** (0.24)	-1.26*** (0.31)	-0.45*** (0.13)	-0.35*** (0.11)	-0.29 (0.19)	0.096 (0.30)	-1.84*** (0.17)	-1.80*** (0.34)	-1.74*** (0.32)	-2.04*** (0.21)
Small Business		0.86*** (0.15)	0.87*** (0.30)	0.90** (0.35)		0.50*** (0.11)	0.53*** (0.16)	0.31 (0.24)		0.34** (0.15)	0.27 (0.19)	0.52*** (0.16)
Propensity to patent		0.050 (0.20)	0.066 (0.22)	0.20 (0.23)		0.19 (0.26)	0.22 (0.28)	0.19 (0.17)		0.16 (0.20)	0.17 (0.22)	0.13 (0.19)
University		-0.62 (0.39)	-0.55 (0.44)	-0.12 (0.65)		-0.93** (0.43)	-0.80* (0.46)	-0.91* (0.52)		-0.40** (0.20)	-0.30 (0.25)	0.072 (0.30)
Bureau FEs	Yes	Yes	Yes	Yes	Yes	Yes	Yes	Yes	Yes	Yes	Yes	Yes
R&D Category FEs	Yes	Yes	Yes	Yes	Yes	Yes	Yes	Yes	Yes	Yes	Yes	Yes
Contract Features	No	No	Yes	Yes	No	No	Yes	Yes	No	No	Yes	Yes
R&D Stage FEs	No	No	No	Yes	No	No	No	Yes	No	No	No	Yes
Amount&Duration FEs	No	No	No	Yes	No	No	No	Yes	No	No	No	Yes
Calendar Year FEs	No	No	No	Yes	No	No	No	Yes	No	No	No	Yes
Pseudo R-squared	0.09	0.12	0.13	0.41	0.13	0.15	0.17	0.40	0.09	0.10	0.11	0.24
Observations	1315.00	1315.00	1315.00	1315.00	1296.00	1296.00	1296.00	1134.00	1315.00	1315.00	1315.00	1315.00

$p < .15$ , \*  $p < .1$ , \*\*  $p < .05$ , \*\*\*  $p < .01$

Notes: \*\*\*  $p < 0.01$ , \*\*  $p < 0.05$ , \*  $p < 0.1$ . Poisson pseudo-likelihood regression with multiple levels of fixed effects with the baseline inverse probability weighting design. The dependent variables are not in logarithmic terms. For sake of tractability, the main variable of interest is scaled by 2 orders of magnitude. Standard errors are two-way clustered by bureau and R&D category and are in parentheses. Contract Features indicates that the model controls for features of the contract and awarding procedure (cost plus, negotiated, competed). Amount and Duration FEs represent deciles for contract value and duration.

Table C.2: LINEAR PROBABILITY MODEL WITH PATENT DUMMY

	# Patents > 0			
	(1)	(2)	(3)	(4)
Share Rel. Deaths	-0.027*** (0.0036)	-0.026*** (0.0051)	-0.024*** (0.0036)	-0.019** (0.0067)
Small Business		0.027** (0.012)	0.024 (0.014)	0.035** (0.012)
Propensity to patent		0.017 (0.016)	0.017 (0.016)	0.018 (0.017)
University		-0.0094 (0.015)	-0.0055 (0.018)	0.018 (0.014)
Bureau FEs	Yes	Yes	Yes	Yes
R&D Category FEs	Yes	Yes	Yes	Yes
Contract Features	No	No	Yes	Yes
R&D Stage FEs	No	No	No	Yes
Amount&Duration FEs	No	No	No	Yes
Calendar Year FEs	No	No	No	Yes
Adj. R-squared	0.03	0.03	0.03	0.07
Observations	1755.00	1755.00	1755.00	1755.00

$p < .15$ , \*  $p < .1$ , \*\*  $p < .05$ , \*\*\*  $p < .01$

*Notes:* \*\*\*  $p < 0.01$ , \*\*  $p < 0.05$ , \*  $p < 0.1$ . Baseline model with a dummy indicating at least one patent generated by the contract as dependent variable. Standard errors are two-way clustered by bureau and R&D category and are in parentheses. Contract Features indicates that the model controls for features of the contract and awarding procedure (cost plus, negotiated, competed). Amount and Duration FEs represent deciles for contract value and duration.

Table C.3: TIME DUMMIES

	Log # Patents				Log # 3Y Citations				Log # Claims			
	(1)	(2)	(3)	(4)	(5)	(6)	(7)	(8)	(9)	(10)	(11)	(12)
At least 2 months before	-0.46*** (0.093)	-0.46 (0.28)	-0.49* (0.26)	-0.49* (0.26)	-0.27 (0.19)	-0.30 (0.24)	-0.34 (0.22)	-0.34 (0.21)	-0.46*** (0.10)	-0.46 (0.29)	-0.49* (0.27)	-0.49* (0.27)
Between 3-4 months before	-0.36 (0.37)	-0.32 (0.37)	-0.25 (0.36)	-0.22 (0.30)	-0.28 (0.29)	-0.26 (0.26)	-0.20 (0.24)	-0.16 (0.22)	-0.38 (0.38)	-0.33 (0.38)	-0.27 (0.37)	-0.23 (0.31)
Between 5-6 months before	-0.31** (0.12)	-0.30 (0.18)	-0.26 (0.21)	-0.19 (0.16)	0.043 (0.069)	0.013 (0.11)	0.041 (0.14)	0.082 (0.14)	-0.35** (0.15)	-0.35* (0.20)	-0.30 (0.23)	-0.24 (0.17)
Cost Plus		-0.99 (0.71)	-0.87 (0.68)	-1.19 (0.83)		-0.39 (0.49)	-0.31 (0.47)	-0.52 (0.56)		-1.03 (0.73)	-0.91 (0.70)	-1.23 (0.86)
Negotiation		-0.078 (0.24)	-0.067 (0.25)	-0.089 (0.28)		0.25 (0.17)	0.26 (0.16)	0.26 (0.20)		-0.078 (0.25)	-0.067 (0.26)	-0.085 (0.29)
Competed		1.04* (0.55)	0.99* (0.52)	1.25*** (0.43)		0.48 (0.43)	0.42 (0.41)	0.64* (0.33)		1.07* (0.55)	1.02* (0.53)	1.27*** (0.44)
Small Business			0.84* (0.41)	0.82** (0.38)			0.69** (0.24)	0.67** (0.26)			0.84* (0.41)	0.82** (0.38)
Tech. Capacity			-0.030 (0.047)	-0.021 (0.048)			0.0014 (0.043)	0.0072 (0.045)			-0.032 (0.046)	-0.023 (0.048)
Bureau FEs	Yes	Yes	Yes	Yes	Yes	Yes	Yes	Yes	Yes	Yes	Yes	Yes
R&D Category FEs	Yes	Yes	Yes	Yes	Yes	Yes	Yes	Yes	Yes	Yes	Yes	Yes
Contract Features	No	No	Yes	Yes	No	No	Yes	Yes	No	No	Yes	Yes
R&D Stage FEs	No	No	No	Yes	No	No	No	Yes	No	No	No	Yes
Amount&Duration FEs	No	No	No	Yes	No	No	No	Yes	No	No	No	Yes
Calendar Year FEs	No	No	No	Yes	No	No	No	Yes	No	No	No	Yes
Adj. R-squared	0.04	0.05	0.05	0.06	0.01	0.01	0.02	0.02	0.04	0.05	0.05	0.06
Observations	1860.00	1860.00	1860.00	1860.00	1860.00	1860.00	1860.00	1860.00	1860.00	1860.00	1860.00	1860.00

\*  $p < .1$ , \*\*  $p < .05$ , \*\*\*  $p < .01$

Notes: \*\*\*  $p < 0.01$ , \*\*  $p < 0.05$ , \*  $p < 0.1$ . Baseline analysis using temporal dummies equal to 1 if a death event occurred in the bureau-location at least two months, between three and four months, or between five and six months before the signature of the contract. Standard errors are two-way clustered by bureau and R&D category and are in parentheses. Contract Features indicates that the model controls for features of the contract and awarding procedure (cost plus, negotiated, competed). Amount and Duration FEs represent deciles for contract value and duration.



Table C.4: SENSITIVITY TO AGE AND SALARY

	Log # Patents	Log # 3Y Citations	Log # Claims
	(1)	(2)	(3)
Age and Salary combination			
Age: 45-49	-0.50**	-0.40***	-0.51**
Salary \$: 80K-90K	(0.18)	(0.056)	(0.18)
Adj. R-squared	0.04	0.01	0.04
Observations	1,692	1,692	1,692
Age: 30-34	-3.79	-4.56	-3.92
Salary \$: 40K-50K	(9.57)	(5.30)	(10.1)
Adj. R-squared	0.18	0.06	0.18
Observations	460	460	460
Age: 45-49	-0.028	-0.025	-0.030
Salary \$: 30K-40K	(0.049)	(0.036)	(0.050)
Adj. R-squared	0.03	0.01	0.03
Observations	1,927	1,927	1,927
Age: 55-59	-0.0056	-0.0004	-0.0062
Salary \$: 40K-50K	(0.024)	(0.016)	(0.025)
Adj. R-squared	0.06	0.05	0.06
Observations	2,397	2,397	2,397
Bureau FEs	Yes	Yes	Yes
R&D Category FEs	Yes	Yes	Yes
Contract Features	Yes	Yes	Yes
R&D Stage FEs	Yes	Yes	Yes
Amount&Duration FEs	Yes	Yes	Yes
Calendar Year FEs	Yes	Yes	Yes

\*  $p < .1$ , \*\*  $p < .05$ , \*\*\*  $p < .01$

Notes: \*\*\*  $p < 0.01$ , \*\*  $p < 0.05$ , \*  $p < 0.1$ . In this table we replicate the models in column 4, 8, and 12 of the baseline regression table 5 using four different treatments. Each treatment is constructed from a different combination of age and salary. Every departure from the median value of age and salary represent a variation of 1 quartile. Standard errors are two-way clustered by bureau and R&D category and are in parentheses. Contract Features indicates that the model controls for features of the contract and awarding procedure (cost plus, negotiated, competed). Amount and Duration FEs represent deciles for contract value and duration.

Table C.5: BUREAU-YEAR FIXED EFFECTS

	Log # Patents		
	(1)	(2)	(3)
Share Rel. Deaths	-0.39** (0.19)	-0.23*** (0.079)	-0.42** (0.19)
Small Business	1.11*** (0.25)	1.09*** (0.37)	1.11*** (0.25)
Propensity to patent	0.44 (0.39)	0.23 (0.28)	0.45 (0.40)
University	0.34 (0.32)	0.24 (0.29)	0.36 (0.33)
Bureau FEs	Yes	Yes	Yes
R&D Category FEs	Yes	Yes	Yes
Contract Features	Yes	Yes	Yes
R&D Stage FEs	Yes	Yes	Yes
Amount&Duration FEs	Yes	Yes	Yes
Calendar Year FEs	Yes	Yes	Yes
Bureau X Calendar Year FEs	Yes	Yes	Yes
Adj. R-squared	0.07	0.03	0.07
Observations	1739.00	1739.00	1739.00
$p < .15$ , * $p < .1$ , ** $p < .05$ , *** $p < .01$			

*Notes:* \*\*\*  $p < 0.01$ , \*\*  $p < 0.05$ , \*  $p < 0.1$ . Baseline regressions controlling for bureau specific trends. Standard errors are two-way clustered by bureau and R&D category and are in parentheses. Contract Features indicates that the model controls for features of the contract and awarding procedure (cost plus, negotiated, competed). Amount and Duration FEs represent deciles for contract value and duration.

Table C.6: EXCLUDING ENDOGENOUS REGRESSORS (TO BE REVIEWED, LESS COLUMNS)

	Log # Patents	Log # 3Y Citations	Log # Claims
	(1)	(2)	(3)
Share Rel. Deaths	-0.50** (0.21)	-0.29*** (0.071)	-0.53** (0.21)
Small Business	0.97** (0.35)	0.84** (0.37)	0.97** (0.35)
Propensity to patent	0.41 (0.39)	0.23 (0.30)	0.43 (0.40)
University	0.27 (0.32)	0.16 (0.27)	0.27 (0.33)
Bureau FEs	Yes	Yes	Yes
R&D Category FEs	Yes	Yes	Yes
Contract Features	Yes	Yes	Yes
R&D Stage FEs	Yes	Yes	Yes
Amount&Duration FEs	Yes	Yes	Yes
Calendar Year FEs	Yes	Yes	Yes
Adj. R-squared	0.06	0.03	0.06
Observations	1755.00	1755.00	1755.00

\*  $p < .1$ , \*\*  $p < .05$ , \*\*\*  $p < .01$

*Notes:* \*\*\*  $p < 0.01$ , \*\*  $p < 0.05$ , \*  $p < 0.1$ . Columns 1, 4, and 7 report baseline regressions from Table 6 columns 4, 8, and 12 without controlling for cost plus and competition. Columns 2, 5, and 8 refer to those regression on the subsample of cost plus contracts. Columns 3, 6, and 9 report the same regressions on the subsample of openly competed contracts (i.e. the action is competed and does not exclude sources of any type). Standard errors are two-way clustered by bureau and R&D category and are in parentheses. Contract Features indicates that the model controls for features of the contract and awarding procedure (cost plus, negotiated, competed). Amount and Duration FEs represent deciles for contract value and duration.

Table C.7: INTERACTING DEATHS WITH OFFICE SIZE DUMMIES

	Log # Patents				Log # 3Y Citations				Log # Claims			
	(1)	(2)	(3)	(4)	(5)	(6)	(7)	(8)	(9)	(10)	(11)	(12)
Above 90th Percentile		-0.40 (0.23)				-0.23** (0.095)				-0.43* (0.24)		
office90		1.55 (1.44)				-0.040 (0.12)				1.60 (1.49)		
Above 75th Percentile			-0.41* (0.20)				-0.23* (0.12)				-0.44** (0.21)	
office75			0.35 (0.33)				0.14 (0.27)				0.37 (0.34)	
Above 50th Percentile				-0.33** (0.15)				-0.28*** (0.093)				-0.35** (0.15)
office50				-0.35 (0.24)				-0.056 (0.17)				-0.34 (0.24)
Small Business	1.17*** (0.31)	1.18*** (0.31)	1.15*** (0.33)	1.20*** (0.32)	1.16** (0.44)	1.16** (0.44)	1.15** (0.45)	1.16** (0.45)	1.16*** (0.31)	1.18*** (0.31)	1.15*** (0.33)	1.20*** (0.32)
Propensity to patent	0.48 (0.42)	0.48 (0.42)	0.49 (0.42)	0.47 (0.42)	0.27 (0.32)	0.27 (0.32)	0.28 (0.33)	0.27 (0.32)	0.49 (0.43)	0.49 (0.44)	0.50 (0.43)	0.49 (0.43)
# Rel. Deaths /Empl. -6 months	-0.39** (0.16)				-0.23** (0.089)				-0.42** (0.17)			
University	0.39 (0.34)	0.40 (0.35)	0.37 (0.37)	0.39 (0.35)	0.28 (0.30)	0.28 (0.30)	0.28 (0.31)	0.28 (0.32)	0.40 (0.35)	0.41 (0.35)	0.38 (0.37)	0.40 (0.35)
Bureau FEs	Yes	Yes	Yes	Yes	Yes	Yes	Yes	Yes	Yes	Yes	Yes	Yes
R&D Category FEs	Yes	Yes	Yes	Yes	Yes	Yes	Yes	Yes	Yes	Yes	Yes	Yes
R&D Stage FEs	Yes	Yes	Yes	Yes	Yes	Yes	Yes	Yes	Yes	Yes	Yes	Yes
Contract Features	Yes	Yes	Yes	Yes	Yes	Yes	Yes	Yes	Yes	Yes	Yes	Yes
Amount&Duration FEs	Yes	Yes	Yes	Yes	Yes	Yes	Yes	Yes	Yes	Yes	Yes	Yes
Calendar Year FEs	Yes	Yes	Yes	Yes	Yes	Yes	Yes	Yes	Yes	Yes	Yes	Yes
Adj. R-squared	0.07	0.07	0.07	0.07	0.03	0.03	0.03	0.03	0.06	0.06	0.06	0.07
Observations	1749.00	1749.00	1749.00	1749.00	1749.00	1749.00	1749.00	1749.00	1749.00	1749.00	1749.00	1749.00

\*  $p < .1$ , \*\*  $p < .05$ , \*\*\*  $p < .01$

Notes: Columns 1, 5, 9 correspond to columns 4, 8 and 12 in Table 5. Then, columns 2, 6, 10 include the dummy Office90, indicating all those observations pertaining bureau/State/year at or above the 90th percentile of the distribution of relevant employees, and its interaction with *Relevant Deaths*; columns 3, 7, 11 include the dummy Office75, indicating all those observations pertaining bureau/State/year at or above the 75th percentile of the distribution of relevant employees, and its interaction with *Relevant Deaths*; columns 4, 8, 12 include the dummy Office50, indicating all those observations pertaining bureau/State/year at or above the 50th percentile of the distribution of relevant employees, and its interaction with *Relevant Deaths*. Standard errors are two-way clustered by bureau and R&D category and are in parentheses. Amount and Duration FEs represent deciles for contract value and duration.

Table C.8: ROBUSTNESS CHECK: BASELINE ESTIMATES - NO SAMPLE WEIGHTS

	Log # Patents				Log # 3Y Citations				Log # Claims			
	(1)	(2)	(3)	(4)	(5)	(6)	(7)	(8)	(9)	(10)	(11)	(12)
Share Rel. Deaths	-0.70 (.)	-0.65*** (0.22)	-0.62** (0.22)	-0.58** (0.27)	-0.41 (.)	-0.37** (0.15)	-0.38*** (0.11)	-0.43** (0.16)	-0.73 (.)	-0.67*** (0.22)	-0.65*** (0.22)	-0.60** (0.28)
Small Business		0.64* (0.33)	0.60* (0.30)	0.96*** (0.22)		0.73** (0.34)	0.77** (0.34)	1.14*** (0.26)		0.65* (0.33)	0.61* (0.30)	0.98*** (0.21)
Propensity to patent		0.43 (0.33)	0.43 (0.33)	0.42 (0.32)		0.12 (0.21)	0.13 (0.22)	0.091 (0.21)		0.43 (0.33)	0.43 (0.33)	0.42 (0.33)
University		0.056 (0.37)	0.14 (0.36)	0.40 (0.28)		0.077 (0.21)	0.17 (0.21)	0.32 (0.19)		0.056 (0.36)	0.14 (0.36)	0.42 (0.29)
Bureau FEs	Yes	Yes	Yes	Yes	Yes	Yes	Yes	Yes	Yes	Yes	Yes	Yes
R&D Category FEs	Yes	Yes	Yes	Yes	Yes	Yes	Yes	Yes	Yes	Yes	Yes	Yes
Contract Features	No	No	Yes	Yes	No	No	Yes	Yes	No	No	Yes	Yes
R&D Stage FEs	No	No	No	Yes	No	No	No	Yes	No	No	No	Yes
Amount&Duration FEs	No	No	No	Yes	No	No	No	Yes	No	No	No	Yes
Calendar Year FEs	No	No	No	Yes	No	No	No	Yes	No	No	No	Yes
Adj. R-squared	0.03	0.04	0.04	0.07	0.01	0.01	0.01	0.03	0.03	0.03	0.03	0.06
Observations	1749.00	1749.00	1749.00	1749.00	1749.00	1749.00	1749.00	1749.00	1749.00	1749.00	1749.00	1749.00

\*  $p < .1$ , \*\*  $p < .05$ , \*\*\*  $p < .01$

Notes: \*\*\*  $p < 0.01$ , \*\*  $p < 0.05$ , \*  $p < 0.1$ . Standard errors are two-way clustered by bureau and R&D category and are in parentheses. Plain OLS estimates corresponding to our baseline IPWRA estimate in Table 5, i.e. all sample weights are set to 1.

Table C.9: ROBUSTNESS CHECK: BASELINE ESTIMATES - NO SAMPLE WEIGHTS AND IPW-CONTROLS

	Log # Patents				Log # 3Y Citations				Log # Claims			
	(1)	(2)	(3)	(4)	(5)	(6)	(7)	(8)	(9)	(10)	(11)	(12)
Share Rel. Deaths	-0.72*** (0.14)	-0.69* (0.33)	-0.66* (0.34)	-0.71*** (0.21)	-0.38*** (0.067)	-0.35 (0.23)	-0.35 (0.21)	-0.47*** (0.14)	-0.75*** (0.14)	-0.72** (0.33)	-0.69* (0.34)	-0.74*** (0.21)
Small Business		0.55 (0.32)	0.48 (0.29)	0.70** (0.28)		0.62 (0.37)	0.64* (0.37)	0.77** (0.36)		0.56* (0.32)	0.49 (0.29)	0.71** (0.28)
Propensity to patent		0.46 (0.34)	0.46 (0.34)	0.46 (0.35)		0.15 (0.21)	0.15 (0.21)	0.14 (0.22)		0.46 (0.34)	0.46 (0.35)	0.46 (0.35)
University		0.087 (0.45)	0.15 (0.45)	0.49 (0.31)		0.092 (0.25)	0.18 (0.26)	0.29 (0.21)		0.093 (0.45)	0.16 (0.45)	0.51 (0.31)
Bureau FEs	Yes	Yes	Yes	Yes	Yes	Yes	Yes	Yes	Yes	Yes	Yes	Yes
R&D Category FEs	Yes	Yes	Yes	Yes	Yes	Yes	Yes	Yes	Yes	Yes	Yes	Yes
Contract Features	No	No	Yes	Yes	No	No	Yes	Yes	No	No	Yes	Yes
R&D Stage FEs	No	No	No	Yes	No	No	No	Yes	No	No	No	Yes
Amount&Duration FEs	No	No	No	Yes	No	No	No	Yes	No	No	No	Yes
Calendar Year FEs	No	No	No	Yes	No	No	No	Yes	No	No	No	Yes
Propensity Score FEs	Yes	Yes	Yes	Yes	Yes	Yes	Yes	Yes	Yes	Yes	Yes	Yes
Adj. R-squared	0.03	0.03	0.04	0.06	0.02	0.02	0.02	0.03	0.03	0.03	0.03	0.06
Observations	1755.00	1755.00	1755.00	1755.00	1755.00	1755.00	1755.00	1755.00	1755.00	1755.00	1755.00	1755.00

$p < .15$ , \*  $p < .1$ , \*\*  $p < .05$ , \*\*\*  $p < .01$

Notes: \*\*\*  $p < 0.01$ , \*\*  $p < 0.05$ , \*  $p < 0.1$ . Standard errors are two-way clustered by bureau and R&D category and are in parentheses. OLS estimates corresponding to the baseline IPWRA model specifications in Table 5 augmented with an expanded set of controls. In particular, in addition to the controls used in the baseline specifications, we include as regression controls all of the variables that we use as predictors for the propensity score in the IPWRA estimates.

Table C.10: ROBUSTNESS CHECK: BASELINE ESTIMATES - ZERO/ONE SAMPLE WEIGHTS

	Log # Patents				Log # 3Y Citations				Log # Claims			
	(1)	(2)	(3)	(4)	(5)	(6)	(7)	(8)	(9)	(10)	(11)	(12)
Share Rel. Deaths	-0.74 (.)	-0.65*** (0.21)	-0.63*** (0.20)	-0.71*** (0.19)	-0.39 (.)	-0.37** (0.17)	-0.39** (0.14)	-0.54*** (0.10)	-0.77 (.)	-0.68*** (0.21)	-0.66*** (0.21)	-0.74*** (0.20)
Small Business		0.54 (0.32)	0.52* (0.27)	0.66* (0.36)		0.63* (0.32)	0.68** (0.31)	0.75** (0.36)		0.54 (0.32)	0.52* (0.27)	0.67* (0.36)
Propensity to patent		0.42 (0.32)	0.42 (0.32)	0.42 (0.33)		0.12 (0.21)	0.12 (0.21)	0.12 (0.21)		0.42 (0.33)	0.42 (0.33)	0.43 (0.33)
University		0.024 (0.33)	0.092 (0.33)	0.35 (0.23)		0.042 (0.20)	0.12 (0.19)	0.18 (0.17)		0.025 (0.33)	0.094 (0.32)	0.36 (0.24)
Bureau FEs	Yes	Yes	Yes	Yes	Yes	Yes	Yes	Yes	Yes	Yes	Yes	Yes
R&D Category FEs	Yes	Yes	Yes	Yes	Yes	Yes	Yes	Yes	Yes	Yes	Yes	Yes
Contract Features	No	No	Yes	Yes	No	No	Yes	Yes	No	No	Yes	Yes
R&D Stage FEs	No	No	No	Yes	No	No	No	Yes	No	No	No	Yes
Amount&Duration FEs	No	No	No	Yes	No	No	No	Yes	No	No	No	Yes
Calendar Year FEs	No	No	No	Yes	No	No	No	Yes	No	No	No	Yes
Adj. R-squared	0.02	0.03	0.03	0.06	0.00	0.01	0.01	0.02	0.02	0.03	0.03	0.05
Observations	1961.00	1847.00	1847.00	1847.00	1961.00	1847.00	1847.00	1847.00	1961.00	1847.00	1847.00	1847.00

\*  $p < .1$ , \*\*  $p < .05$ , \*\*\*  $p < .01$

Notes: \*\*\*  $p < 0.01$ , \*\*  $p < 0.05$ , \*  $p < 0.1$ . Standard errors are two-way clustered by bureau and R&D category and are in parentheses. OLS estimates on a subsample of that, relative to the baseline analysis sample in the main text, retains all the observations associated with an office/year experiencing at least one death event (i.e., treated group) and the most similar observations associated with an office/year experiencing no deaths (i.e., control group).

Table C.11: BASELINE REGRESSIONS WITH HETEROSCEDASTIC ROBUST S.E.

	Log # Patents				Log # 3Y Citations				Log # Claims			
	(1)	(2)	(3)	(4)	(5)	(6)	(7)	(8)	(9)	(10)	(11)	(12)
Share Rel. Deaths	-0.64*** (0.17)	-0.60*** (0.17)	-0.55*** (0.16)	-0.39 (0.28)	-0.39*** (0.11)	-0.36*** (0.11)	-0.36*** (0.10)	-0.23 (0.22)	-0.66*** (0.17)	-0.61*** (0.18)	-0.57*** (0.17)	-0.42 (0.28)
Small Business		0.70 (0.55)	0.64 (0.57)	1.17* (0.67)		0.70 (0.44)	0.68 (0.47)	1.16** (0.56)		0.70 (0.55)	0.63 (0.57)	1.16* (0.67)
Propensity to patent		0.44 (0.33)	0.43 (0.33)	0.48 (0.30)		0.28 (0.31)	0.27 (0.31)	0.27 (0.27)		0.45 (0.34)	0.45 (0.34)	0.49 (0.31)
University		-0.20 (0.36)	-0.12 (0.36)	0.39 (0.40)		-0.098 (0.32)	-0.026 (0.32)	0.28 (0.35)		-0.20 (0.37)	-0.12 (0.37)	0.40 (0.40)
Bureau FEs	Yes	Yes	Yes	Yes	Yes	Yes	Yes	Yes	Yes	Yes	Yes	Yes
R&D Category FEs	Yes	Yes	Yes	Yes	Yes	Yes	Yes	Yes	Yes	Yes	Yes	Yes
Contract Features	No	No	Yes	Yes	No	No	Yes	Yes	No	No	Yes	Yes
R&D Stage FEs	No	No	No	Yes	No	No	No	Yes	No	No	No	Yes
Amount&Duration FEs	No	No	No	Yes	No	No	No	Yes	No	No	No	Yes
Calendar Year FEs	No	No	No	Yes	No	No	No	Yes	No	No	No	Yes
Adj. R-squared	0.02	0.03	0.03	0.07	0.01	0.01	0.01	0.03	0.02	0.03	0.03	0.07
Observations	1749.00	1749.00	1749.00	1749.00	1749.00	1749.00	1749.00	1749.00	1749.00	1749.00	1749.00	1749.00

\*  $p < .1$ , \*\*  $p < .05$ , \*\*\*  $p < .01$

Notes: Regressions from Table 5 are estimated with heteroskedastic robust standard errors.

Table C.12: BASELINE REGRESSIONS WITH HETEROSKEDASTIC ROBUST S.E. AND FIRM FIXED EFFECTS

	Log # Patents				Log # 3Y Citations				Log # Claims			
	(1)	(2)	(3)	(4)	(5)	(6)	(7)	(8)	(9)	(10)	(11)	(12)
Share Rel. Deaths	-1.13*** (0.36)	-1.11*** (0.36)	-1.08*** (0.33)	-0.78** (0.38)	-0.59** (0.26)	-0.58** (0.26)	-0.60** (0.26)	-0.38 (0.25)	-1.17*** (0.37)	-1.15*** (0.37)	-1.11*** (0.34)	-0.82** (0.39)
Small Business		-0.020 (0.23)	0.0042 (0.24)	-0.0086 (0.47)		0.13 (0.18)	0.16 (0.19)	0.43 (0.35)		-0.017 (0.24)	0.0090 (0.25)	-0.016 (0.49)
Propensity to patent		-0.73 (0.66)	-0.71 (0.65)	-0.63 (0.61)		-0.57 (0.68)	-0.56 (0.67)	-0.66 (0.63)		-0.73 (0.68)	-0.71 (0.67)	-0.62 (0.62)
University		0 (.)	0 (.)	0 (.)		0 (.)	0 (.)	0 (.)		0 (.)	0 (.)	0 (.)
Bureau and Firm FEs	Yes	Yes	Yes	Yes	Yes	Yes	Yes	Yes	Yes	Yes	Yes	Yes
R&D Category FEs	Yes	Yes	Yes	Yes	Yes	Yes	Yes	Yes	Yes	Yes	Yes	Yes
Contract Features	No	No	Yes	Yes	No	No	Yes	Yes	No	No	Yes	Yes
R&D Stage FEs	No	No	No	Yes	No	No	No	Yes	No	No	No	Yes
Amount&Duration FEs	No	No	No	Yes	No	No	No	Yes	No	No	No	Yes
Calendar Year FEs	No	No	No	Yes	No	No	No	Yes	No	No	No	Yes
Adj. R-squared	0.12	0.12	0.12	0.16	0.13	0.13	0.13	0.15	0.11	0.11	0.12	0.16
Observations	1618.00	1618.00	1618.00	1614.00	1618.00	1618.00	1618.00	1614.00	1618.00	1618.00	1618.00	1614.00

\*  $p < .1$ , \*\*  $p < .05$ , \*\*\*  $p < .01$

Notes: Regressions from Table 5 are estimated with heteroskedastic robust standard errors and firm fixed effects.

Table C.13: BASELINE ESTIMATES WITH DIFFERENT SPECIFICATION FOR EMPLOYMENT AS DEATH PREDICTOR

	Log # Patents				Log # 3Y Citations				Log # Claims			
	(1)	(2)	(3)	(4)	(5)	(6)	(7)	(8)	(9)	(10)	(11)	(12)
Share Rel. Deaths	-0.57*** (0.094)	-0.53*** (0.12)	-0.51*** (0.097)	-0.30*** (0.10)	-0.36*** (0.054)	-0.34*** (0.065)	-0.35*** (0.058)	-0.15* (0.083)	-0.59*** (0.097)	-0.55*** (0.12)	-0.53*** (0.099)	-0.33*** (0.10)
Small Business		0.60** (0.28)	0.51 (0.31)	0.57* (0.32)		0.49** (0.21)	0.43* (0.24)	0.44 (0.29)		0.60** (0.28)	0.50 (0.31)	0.56* (0.32)
Propensity to patent		0.36 (0.24)	0.36 (0.25)	0.42 (0.27)		0.22 (0.18)	0.21 (0.19)	0.26 (0.19)		0.37 (0.25)	0.36 (0.26)	0.43 (0.28)
University		-0.21 (0.39)	-0.18 (0.42)	0.32 (0.33)		-0.089 (0.27)	-0.060 (0.28)	0.18 (0.25)		-0.21 (0.39)	-0.18 (0.42)	0.33 (0.33)
Bureau FEs	Yes	Yes	Yes	Yes	Yes	Yes	Yes	Yes	Yes	Yes	Yes	Yes
R&D Category FEs	Yes	Yes	Yes	Yes	Yes	Yes	Yes	Yes	Yes	Yes	Yes	Yes
Contract Features	No	No	Yes	Yes	No	No	Yes	Yes	No	No	Yes	Yes
R&D Stage FEs	No	No	No	Yes	No	No	No	Yes	No	No	No	Yes
Amount&Duration FEs	No	No	No	Yes	No	No	No	Yes	No	No	No	Yes
Calendar Year FEs	No	No	No	Yes	No	No	No	Yes	No	No	No	Yes
Adj. R-squared	0.02	0.02	0.03	0.07	0.01	0.01	0.01	0.03	0.02	0.02	0.02	0.07
Observations	1875.00	1875.00	1875.00	1875.00	1875.00	1875.00	1875.00	1875.00	1875.00	1875.00	1875.00	1875.00

$p < .15$ , \*  $p < .1$ , \*\*  $p < .05$ , \*\*\*  $p < .01$

Notes: \*\*\*  $p < 0.01$ , \*\*  $p < 0.05$ , \*  $p < 0.1$ . Baseline model for which we use Relevant Employment in place Employment as predictor of the propensity score. Standard errors are two-way clustered by bureau and R&D category and are in parentheses. Contract Features indicates that the model controls for features of the contract and awarding procedure (cost plus, negotiated, competed). Amount and Duration FEs represent deciles for contract value and duration.

Table C.14: 25K THRESHOLD

	Log # Patents				Log # 3Y Citations				Log # Claims			
	(1)	(2)	(3)	(4)	(5)	(6)	(7)	(8)	(9)	(10)	(11)	(12)
Share Rel. Deaths	-0.67*** (0.21)	-0.66*** (0.15)	-0.64*** (0.16)	-0.46*** (0.15)	-0.35 (.)	-0.38*** (0.063)	-0.36*** (0.079)	-0.27*** (0.090)	-0.70*** (0.21)	-0.69*** (0.15)	-0.66*** (0.16)	-0.49*** (0.15)
Cost Plus		-1.01 (0.72)	-0.89 (0.70)	-1.26 (0.88)		-0.44 (0.57)	-0.33 (0.56)	-0.58 (0.67)		-1.05 (0.73)	-0.93 (0.72)	-1.31 (0.90)
Negotiation		0.028 (0.33)	0.025 (0.33)	-0.0074 (0.35)		0.33 (0.27)	0.33 (0.25)	0.32 (0.33)		0.031 (0.33)	0.027 (0.33)	0.00037 (0.36)
Competed		1.07 (0.73)	0.95 (0.71)	1.32** (0.53)		0.53 (0.57)	0.41 (0.55)	0.72* (0.41)		1.09 (0.74)	0.98 (0.72)	1.33** (0.55)
Small Business			0.94** (0.36)	0.85** (0.37)			0.88*** (0.30)	0.82** (0.29)			0.94** (0.36)	0.85** (0.37)
Tech. Capacity			-0.040 (0.078)	-0.032 (0.075)			-0.0097 (0.054)	-0.0045 (0.051)			-0.041 (0.078)	-0.034 (0.075)
Bureau FEs	Yes	Yes	Yes	Yes	Yes	Yes	Yes	Yes	Yes	Yes	Yes	Yes
R&D Category FEs	Yes	Yes	Yes	Yes	Yes	Yes	Yes	Yes	Yes	Yes	Yes	Yes
Contract Features	No	No	Yes	Yes	No	No	Yes	Yes	No	No	Yes	Yes
R&D Stage FEs	No	No	No	Yes	No	No	No	Yes	No	No	No	Yes
Amount&Duration FEs	No	No	No	Yes	No	No	No	Yes	No	No	No	Yes
Calendar Year FEs	No	No	No	Yes	No	No	No	Yes	No	No	No	Yes
Adj. R-squared	0.05	0.05	0.05	0.07	0.02	0.02	0.02	0.03	0.04	0.05	0.05	0.06
Observations	1712.00	1712.00	1712.00	1711.00	1712.00	1712.00	1712.00	1711.00	1712.00	1712.00	1712.00	1711.00

\*  $p < .1$ , \*\*  $p < .05$ , \*\*\*  $p < .01$

Notes: \*\*\*  $p < 0.01$ , \*\*  $p < 0.05$ , \*  $p < 0.1$ . We keep contracts with expected value above 25,000\$. Standard errors are two-way clustered by bureau and R&D category and are in parentheses. Contract Features indicates that the model controls for features of the contract and awarding procedure (cost plus, negotiated, competed). Amount and Duration FEs represent deciles for contract value and duration.



Table C.15: 1ST QUANTILE THRESHOLD

	Log # Patents				(5)	Log # 3Y Citations			(9)	Log # Claims		
	(1)	(2)	(3)	(4)		(6)	(7)	(8)		(10)	(11)	(12)
Share Rel. Deaths	-0.69*** (0.20)	-0.64*** (0.15)	-0.60*** (0.16)	-0.43*** (0.14)	-0.37 (.)	-0.39*** (0.066)	-0.37*** (0.068)	-0.27*** (0.086)	-0.72*** (0.21)	-0.67*** (0.16)	-0.63*** (0.16)	-0.46*** (0.15)
Cost Plus		-1.25 (0.75)	-1.16 (0.76)	-1.44 (1.06)		-0.76 (0.83)	-0.70 (0.84)	-0.94 (1.07)		-1.29 (0.77)	-1.21 (0.78)	-1.49 (1.08)
Negotiation		-0.016 (0.27)	0.019 (0.26)	0.028 (0.34)		0.42 (0.29)	0.47* (0.26)	0.55* (0.28)		-0.015 (0.28)	0.019 (0.27)	0.026 (0.33)
Competed		1.62 (1.03)	1.57 (0.96)	1.95*** (0.66)		0.77 (0.88)	0.72 (0.84)	1.03* (0.56)		1.67 (1.04)	1.61 (0.97)	1.98** (0.68)
Small Business			1.35** (0.50)	1.22** (0.45)			1.20*** (0.34)	1.05*** (0.34)			1.36** (0.51)	1.22** (0.46)
Tech. Capacity			-0.029 (0.085)	-0.019 (0.077)			0.0050 (0.054)	0.013 (0.053)			-0.031 (0.086)	-0.021 (0.080)
Bureau FEs	Yes	Yes	Yes	Yes	Yes	Yes	Yes	Yes	Yes	Yes	Yes	Yes
R&D Category FEs	Yes	Yes	Yes	Yes	Yes	Yes	Yes	Yes	Yes	Yes	Yes	Yes
Contract Features	No	No	Yes	Yes	No	No	Yes	Yes	No	No	Yes	Yes
R&D Stage FEs	No	No	No	Yes	No	No	No	Yes	No	No	No	Yes
Amount&Duration FEs	No	No	No	Yes	No	No	No	Yes	No	No	No	Yes
Calendar Year FEs	No	No	No	Yes	No	No	No	Yes	No	No	No	Yes
Adj. R-squared	0.04	0.04	0.05	0.06	0.01	0.01	0.02	0.02	0.04	0.04	0.05	0.06
Observations	1315.00	1315.00	1315.00	1313.00	1315.00	1315.00	1315.00	1313.00	1315.00	1315.00	1315.00	1313.00

\*  $p < .1$ , \*\*  $p < .05$ , \*\*\*  $p < .01$

Notes: \*\*\*  $p < 0.01$ , \*\*  $p < 0.05$ , \*  $p < 0.1$ . We keep contracts above the first quartile of the expected value distribution, which amounts to 144,559\$. Standard errors are two-way clustered by bureau and R&D category and are in parentheses. Contract Features indicates that the model controls for features of the contract and awarding procedure (cost plus, negotiated, competed). Amount and Duration FEs represent deciles for contract value and duration.

Table C.16: SENSITIVITY TO WORKING CATEGORIES

	Log # Patents	Log # 3Y Citations	Log # Claims
	(1)	(2)	(3)
Categories excluded every time			
1102	-0.37***	-0.25**	-0.39***
CONTRACTING	(0.12)	(0.097)	(0.12)
2210	-0.41***	-0.23**	-0.43***
INFORMATION TECHNOLOGY MANAGEMENT	(0.14)	(0.11)	(0.14)
0301	-0.41***	-0.25**	-0.43***
MISCELLANEOUS ADMINISTRATION AND PROGRAM	(0.12)	(0.098)	(0.13)
0610	-0.41***	-0.25**	-0.44***
NURSE	(0.12)	(0.095)	(0.13)
1811	-0.41***	-0.25**	-0.44***
CRIMINAL INVESTIGATION	(0.12)	(0.094)	(0.13)
1801	-0.41***	-0.25**	-0.44***
GENERAL INSPECTION, INVESTIGATION, ENFORCEMENT, AND COMPLIANCE SERIES	(0.12)	(0.094)	(0.13)
0007	-0.41***	-0.25**	-0.44***
CORRECTIONAL OFFICER	(0.12)	(0.094)	(0.13)
1896	-0.41***	-0.25**	-0.44***
BORDER PATROL ENFORCEMENT SERIES	(0.12)	(0.094)	(0.13)
0905	-0.42***	-0.25**	-0.45***
GENERAL ATTORNEY	(0.12)	(0.093)	(0.13)
0343	-0.70*	-0.53***	-0.73*
MANAGEMENT AND PROGRAM ANALYSIS	(0.35)	(0.15)	(0.36)
Bureau FEs	Yes	Yes	Yes
R&D Category FEs	Yes	Yes	Yes
Contract Features	Yes	Yes	Yes
R&D Stage FEs	Yes	Yes	Yes
Amount&Duration FEs	Yes	Yes	Yes
Calendar Year FEs	Yes	Yes	Yes
Observations	1,794	1,794	1,794

\*  $p < .1$ , \*\*  $p < .05$ , \*\*\*  $p < .01$

Notes: \*\*\*  $p < 0.01$ , \*\*  $p < 0.05$ , \*  $p < 0.1$ . In this table we replicate the models in column 4, 8, and 12 of the baseline regression table xxx by using different treatments. Each treatment is constructed by excluding one of the ten most represented categories amongst the death events. Standard errors are two-way clustered by bureau and R&D category and are in parentheses. Contract Features indicates that the model controls for features of the contract and awarding procedure (cost plus, negotiated, competed). Amount and Duration FEs represent deciles for contract value and duration.